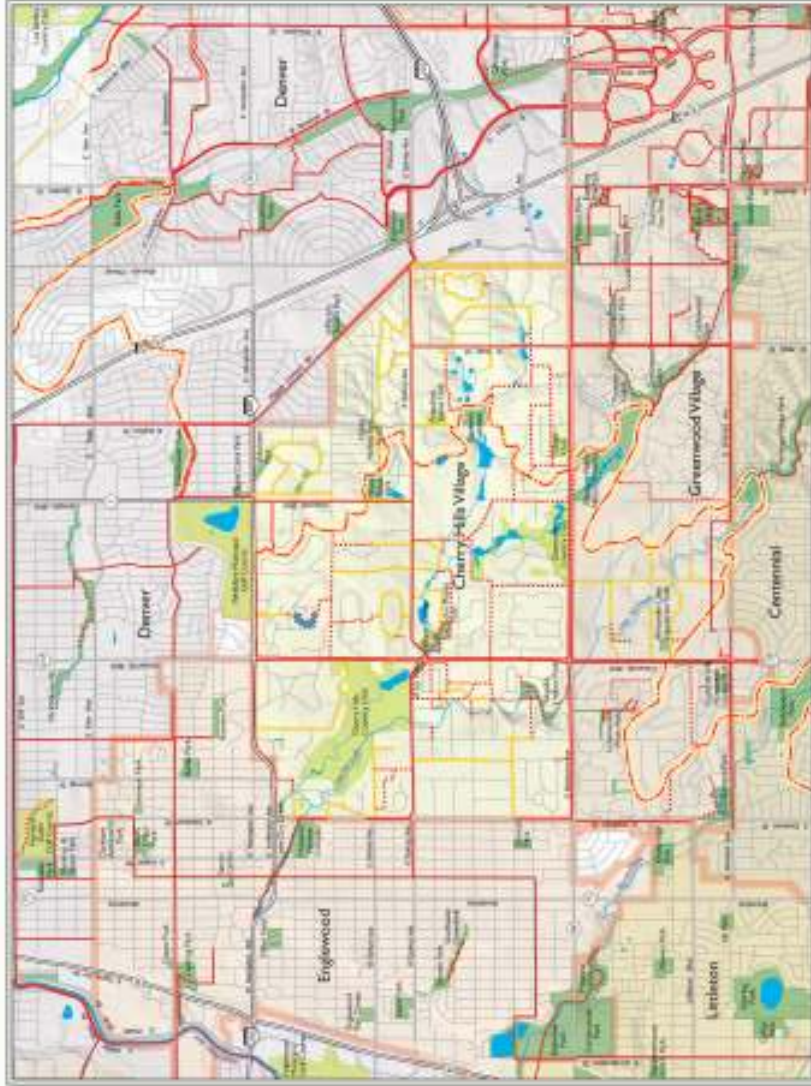


### Regional Parks and Trails

- Legend**
- High Line Canal Trail
  - Paved Trail
  - On Street Trail
  - Unpaved Trail
  - Municipal Boundary

- Park
- Golf Course / Country Club
- High Line Canal

January 2007



Welcome to

## Cherry Hills Village



Cherry Hills Village's natural setting helps define the community's character. Over half a century of careful planning has resulted in lush residential areas complemented by preserved undeveloped spaces. Neighbors are linked by convenient trails and open spaces. Families can stroll along paths and catch glimpses of wildlife. The unpaved surfaces and breathtaking panoramas welcome horseback riders of all ages. Children, as well as adults, have miles of safe trails for bicycle riding.

You're invited to share in the beauty of this place. Watch for the diverse wildlife, which include many species of birds, warblers, small woodland animals, and coyotes.

Enjoy natural features that range from age-old cottonwood to canal swiches. Always remember that all who pass through this land are ultimately its gardeners and caretakers. Together we can keep Cherry Hills Village special.



### Parks & Facilities

	Multi-Use	Swim	Playground	Parking	Natural Open Space	Multi-Use Trails	Horse Riding Areas
<b>Blossmer Common</b> Dakota St. at the High Line Canal	●						
<b>Dakota Hollow Park</b> S. Dakota St. at E. Oxford Ave.	●						
<b>John Meade Park</b> E. Quincy Ave. at Meade Lane	●		●				
<b>Three Pines Park</b> S. Colorado Blvd. at High Line Canal	●						
<b>Woodlee Hollow Park</b> N.W. at S. University Blvd. & E. Bellevue Ave.	●						●

