

**CHERRY HILLS VILLAGE**  
2450 East Quincy Avenue  
Cherry Hills Village, CO 80113

PRSRT STD  
U.S. Postage  
**PAID**  
Denver, CO  
Permit No. 331

# *The Village Crier*



Volume 53 No. 5

September/October 2011

Cherry Hills Village Phone: **303-789-2541**  
Website: [www.cherryhillsvillage.com](http://www.cherryhillsvillage.com)

Fax: **303-761-9386**  
Cable TV: **KCHV Channel 22**

Police: **303-761-8711**  
email: [village@cherryhillsvillage.com](mailto:village@cherryhillsvillage.com)

## **NEW ZONING REGULATIONS APPROVED BY CITY COUNCIL**

At their September 6<sup>th</sup> meeting, the City Council voted 5 to 1 to adopt Bulk Plane and Floor Area Ratio (FAR) zoning regulations in the R-1, R-2, R-3, R-4 and R-5 residential zone districts, as well as an increase in the allowed height of structures from 30 to 35 feet in the R-1, R-2 and R-3 residential zone districts. The new regulations went into effect on September 26<sup>th</sup>.

A Bulk Plane requirement lowers height near the edges of a lot by establishing an inclined plane over which buildings may not protrude. A FAR requirement limits the size of a home relative to the size of the lot. By pushing taller building elements towards the center of a lot and ensuring buildings are proportional to the size of the lot, the Bulk Plane and FAR standards are intended to reduce massing impacts on neighboring properties and promote privacy and solar access.

The Bulk Plane and FAR zoning regulations and height increase were part of the recommendations made to the City Council by the City's Residential Development Standards Committee (RDSC) in 2009. The RDSC was asked by the City Council to study and make recommendations on possible zoning and building code changes to address community concerns about the size and scale of development of some new homes relative to the particular lot size and character of the neighborhood.

The RDSC also recommended that the City preserve mature landscaping on the perimeter of lots, consider adopting a "green building code" and create a process for neighborhood review of new homes as they are being designed. The City recently passed a tree preservation ordinance based on the RDSC recommendations and continues to study the possibility of adopting a "green building code" and neighborhood review guidelines.

Additional information on the Bulk Plane and FAR requirements is available on the City's website at [www.cherryhillsvillage.com/BulkPlaneFAR.aspx](http://www.cherryhillsvillage.com/BulkPlaneFAR.aspx) or by calling the Community Development Department at **303-783-2721**.

### **HIGHLIGHTS OF THIS ISSUE:**

See page 9 for details about Holiday Tree Lighting event December 2nd.

For overview of 2012 budget see "Mayoral Musings" and budget time line - page 2

National Floodplain update - page 4

Village snow removal plan - page 6

Japanese Beetle threat - page 7

Pictures of CHLP barn tour - page 8

New CHVE Principal - page 12

# MAYORAL MUSINGS



*Mayor Mike Wozniak*

Your City Council is in the midst of working through our 2012 budget for the City of Cherry Hills Village. As you may recall, our 2011 budget was based upon conservative estimates because we anticipated that vehicle sales would continue to slow, there would be a decline in building permits, and depressed interest rates. Our conservative budget was slightly insulated from the economic downturn that other communities have experienced. However, as we approach 2012, we remain concerned because the Arapahoe County Assessor has advised us that property tax revenues are projected to decrease by 16% or approximately \$400,000 from 2011. With this in mind, and in recognition of our commitment to our citizens to always operate the City in a fiscally sound manner with a balanced budget, we are anticipating additional belt tightening for the ensuing year.

First, we will recommend that all of our employees salaries including public works, administration, and the police department, be frozen for 2012. While this is in no way a reflection of the great service we receive from our dedicated employees, we feel that it is essential in order to be able to adjust to declining revenues. As we also face a projected 15% increase in health insurance for our employees, we recognize that additional cuts will need to be made. We are anticipating a 2012 general fund budgeted revenue of approximately \$5.6 million and have matched our budgeted expenses at the same amount. While we will consistently monitor our revenues and expenditures to assure that each of our fund balances is preserved at levels required by our fund balance policy, we recognize that the additional reductions will be required. Our budgeted revenues for all funds in 2012 are expected to decrease by approximately 6% to \$7.9 million. Our budgeted expenditures for all funds in 2012, as compared to our 2011 adopted budget, are expected to increase by approximately 8% to \$8.3 million.

As we work through this process, our initial study session occurred on October 4th, our first reading of the proposed budget will be on November 15th, and our final reading of the proposed budget will be on December 15th.

We welcome your input and your support. Moreover, we want to thank our 46 fulltime employees and 10 part time and seasonal employees for their willingness to work with us during these budgetary challenges.

Notwithstanding these belt tightening measures, our general fund balance is projected to end the year 2012 at \$2,830,904.00. Our City remains healthy financially, and we continue to strive to provide the services that we all expect.

Thank you for your continued support and interest.

*Mike*

## THE 2012 BUDGET CALENDAR

The City Charter requires that the City Council adopt a budget calendar by resolution each year. At the September 6, 2011 meeting, the following 2012 budget calendar was adopted by the City Council

1. The City Manager submits the Proposed 2012 Budget on or before **September 20, 2011**.
2. The City Council holds a study session to review the Proposed 2012 Budget on or before **October 4, 2011**.
3. A Public Hearing will be held concerning the Proposed 2012 Budget and first readings of the Appropriations Ordinance and Mill Levy Ordinance on or before **November 15, 2011**.
4. The Appropriations Ordinance and Mill Levy Ordinance must be adopted on second reading before the certification of tax levies deadline of **December 15, 2011** required by Arapahoe County Assessor's Office.

Residents with questions regarding the 2012 budget preparation process are asked to please contact **Karen Proctor**, Director of Finance and Administration, at **303-783-2723** or [kproctor@cherryhillsvillage.com](mailto:kproctor@cherryhillsvillage.com).



# FROM THE CHERRY HILLS POLICE

## DON'T FALL VICTIM TO IDENTITY THEFT

In recent weeks, several residents of Cherry Hills Village have fallen victim to identity theft. In most cases, unknown individuals opened fraudulent credit card accounts in the name of the victims and used these credit cards for fraudulent purchases. The victims find out about these credit card accounts when they receive a notice that they are overdue for payment on the account.

There are a few ways to protect your identity from being stolen or misused:

1. Don't leave your mail in your mailbox overnight or on weekends.
2. Deposit mail only in U.S. Postal Service collection boxes or at the Post Office.
3. Tear up or shred unwanted documents that contain personal information.

In addition to the above tips, it is also important to check your credit report once a year to see if there have been any accounts opened in your name without your consent. Residents of Colorado can request one free credit report from the three major credit reporting agencies listed below.

Equifax: **1-800-525-6285** or [www.equifax.com](http://www.equifax.com)

Experian: **1-888-397-3742** or [www.experian.com](http://www.experian.com)

TransUnion: **1-800-680-7289** or [www.transunion.com](http://www.transunion.com)

For more information on identity theft, or, if you have become the victim of identity theft, you can contact the Federal Trade Commission at [www.consumer.gov/idtheft](http://www.consumer.gov/idtheft) or call their Identity Theft Hotline at **1-877-438-4338**.

## STEVE SZYMANSKI APPOINTED TO PLANNING AND ZONING COMMISSION

**Steve Szymanski** has been appointed to the City's Planning and Zoning Commission. Mr. Szymanski previously served on the City's Residential Development Standards Committee (RDSC) and has been a resident of Cherry Hills Village for 11 years. Mr. Szymanski lives in Council District No. 4.

## VILLAGE HIRES NEW ANIMAL CONTROL OFFICER JOHN NEWHOUSE



Following an extensive hiring process, the City of Cherry Hills Village hired **John Newhouse** in August for the position of Animal Control Officer. The City received over eighty applications for the position from numerous well qualified applicants. John brings 14 years of experience from Arapahoe County where he

held the position of Animal Control Officer and Insect Control Specialist. John studied Zoology at Colorado State University and worked with nuisance wildlife for four years prior to beginning his career with Arapahoe County. His diverse background allows for an extensive knowledge relating to both domestic animals and the wildlife that is ever present in our City.

John is an outstanding addition to the police department and an excellent resource for the community. For any animal related questions or concerns, John can be reached at through the police department at **303-783-2739** or by calling the Arapahoe County Communications Center non-emergency line at **303-795-4711**.

## PUBLIC SAFETY FACILITY UPDATE

On September 6, 2011, the Cherry Hills Village City Council unanimously approved an intergovernmental agreement with the South Metro Fire Rescue Authority (SMFRA) pertaining to the construction, ownership, administration and operation of the proposed Joint Public Safety Facility. The completion of this document was a major accomplishment and a true collaborative effort between the City and the SMFRA, as there are very few combined police/fire facilities in the state of Colorado.

Initial design drawings were completed in early September, and final construction drawings are expected to be finished in the first half of November. The final construction drawings will provide a reliable cost estimate that will be presented to City Council and the SMFRA Board of Directors for approval at the end of the year. If approved, construction on the new facility should begin in early 2012 with an estimated build time of 9 to 12 months. For any questions related to the new Joint Public Safety Facility, please contact **Deputy Chief of Police Jody Sansing at 303-783-2727** or **SMFRA Assistant Chief Vince Turner at 720-989-2401**.

## NATIONAL FLOOD INSURANCE PROGRAM (NFIP)...

Did you know that the City of Cherry Hills Village has participated in the National Flood Insurance Program (NFIP) since 1978? By participating in the NFIP, residents are eligible for federally backed flood insurance regardless of whether they are in the floodplain. There are approximately 200 properties in the City that are impacted by a FEMA regulated floodplains and flood insurance may be mandatory for these properties. In December of last year, FEMA updated the Floodplain Insurance Rate Maps (FIRMs) for all of Arapahoe County, including Cherry Hills Village. If you are curious whether a portion of your property is located within a designated floodplain, you are welcome to review the FIRM for the Cherry Hills Village or FEMA Elevation Certificates for individual properties at the Village Center, 2450 E. Quincy Avenue.

## FOR DEVELOPMENT WITHIN THE FLOODPLAIN...

Please remember, any development or construction within the floodplain, including the installation of fences or grading within the floodplain, requires approval from the City. Complete regulations and information on the City's floodplain development permit requirements can be found in Article XVII of the City's zoning code at: [www.colocode.com/cherry/cherry\\_16.pdf](http://www.colocode.com/cherry/cherry_16.pdf).

## HELPFUL TIPS...

The following are helpful tips for residents who live in flood prone areas:

- Know the extent and nature of the flood hazard in your area.
- Plan escape routes to high ground.
- Buy flood insurance for your property.
- During times of heavy rainfall watch the level of water in the drainageway and stay tuned to radio or television for possible flood warnings.
- Evacuate the flood hazard area in times of an impending flood.

Please feel free to contact the Community Development Department at **303-783-2721** or visit our website at [www.cherryhillsvillage.com/floodplain.aspx](http://www.cherryhillsvillage.com/floodplain.aspx) for more information.

## PUBLIC ART FOR THE VILLAGE

The Cherry Hills Public Arts Commission (CHPAC) is proud to announce that Walt Horton's heroic (12.5 feet high) sculpture of *Sundown* will be placed off Quincy near the entrance to the Village Center. This piece is owned by Peggy Horton, widow of the late Walt Horton and will be on loan to the Village. It is a representational piece of a strong pioneer woman tilling the soil. Horton described the piece by saying, "*Sundown* is a tribute to the strength of so many women who shaped our lives, many of whom we cannot even call by name. Women lost in our genealogies. This is the artist's way of saying thank you to the magnificent creation called woman."

The Village has received this loan thanks to the generosity and interest of **Greg and Susie Stevinson**. The Stevinsons have been instrumental in starting public art programs at their Denver West development, in Golden, Lakewood and throughout Jefferson County. A huge thank you to Susie and Greg for kick starting the Cherry Hills Village Public Art program.

The Public Arts Commission will plan an unveiling ceremony to celebrate the beginning of its program. Date and times have not been decided, but will be available on the City's website in the near future at [www.cherryhillsvillage.com](http://www.cherryhillsvillage.com).

The goal of the Arts Commission is to select a diverse array of art: representational, abstract, and/or kinetic. At this time, the Commission will be focused on sculptures as the City of Cherry Hills has no place to hang indoor art. Since it is a new Commission, its members are formulating a process for communicating with artists and for establishing criteria for accepting loans or gifts. The pieces on loan may be for sale. Residents interested in purchasing any of the art works, may contact the Village Center for more information.

The Commission anticipates that an integral piece of the program will be education. They hope to have the various artists share their ideas through talks, studio visits and more.

**NEXT CRIER DEADLINE: NOVEMBER 25TH**

*Please make your yearly donation to the Crier if you haven't already done so. Mail or drop off a check made out to The Crier, to 2450 East Quincy Ave., (the Village Center), Cherry Hills Village, CO. 80113. Thank You.*



# VOTING INFORMATION

An Arapahoe County registered voter may vote in the **November 1, 2011 Coordinated Election** using one of the three voting methods listed below:

- **Election Day Vote Centers**

- Voting on Election Day will be available from 7:00 a.m. to 7:00 p.m.
- There will be seventeen (17) Vote Centers conveniently located around the county. For a list of all seventeen (17) Vote Centers, you can visit: <http://www.arapahoevotes.com/2011-vote-center-locations/>.

- **Mail Ballots**

- If you are a Permanent Mail Ballot Voter, you will still receive your ballot in the mail beginning **Tuesday, October 11, 2011**.
- If you would like to vote by mail in this election and are not a permanent mail ballot voter, please visit the above link to request a mail ballot.
- You have two options to return your voted mail ballot. You may mail your ballot (the postage to return your voted mail ballot for this election is **\$0.64**). Please note, ballots must be received by Arapahoe County's office no later than 7:00 p.m. on election night. Ballots postmarked on election day, but received after election day, will not be counted. You may also drop-off your voted mail ballot at a drop off location. To find a location close to you, you can visit:

<http://www.arapahoevotes.com/2011-voter-assistance-centers/>.

- **Early Voting**

- Early Voting will be available from Monday, October 17, 2011 through Friday, October 28, 2011, including Saturday, October 22nd.

- **Related Information**

- To view your **2011 Coordinated Election Sample Ballot**, you can visit: <http://www.arapahoevotes.com/my-voting-information/>.

You can also contact the Arapahoe County Election Office by calling **(303) 795-4511**.

## ARAPAHOE COUNTY GRANTS TO CHERRY HILLS VILLAGE 2006-2011

2006 - Asphalt overlay grant	<b>\$50,000</b> (Included all City paved trails)
2007 - Volunteer Park grant	<b>\$11,000</b> (Park is located at Cherry land drive and Parkway drive)
2007 - Little Dry Creek	<b>\$240,600</b>
2008 - John Meade	<b>\$27,900</b> (Restoration of Horse arena)
2008 - Asphalt II	<b>\$42,900</b> (Included paved City trails)
2009 - Horse Arena	<b>\$25,100</b> (Restoration of Woodie Hollow Horse arena)
2011 - Quincy Farms	<b>\$46,000</b> (Planning Grant)

## KENT PLACE TRAFFIC DELAYS

### PROBLEMS TO PERSIST AT HAMPDEN AND UNIVERSITY

Village residents can expect to see traffic delays continue through the fall of 2011 **near the intersection of East Hampden Avenue and South University Boulevard**. Current planning calls for extensive roadway improvements, including the installation of new traffic signals which are targeted for completion in late October. The police department has noticed a significant increase in traffic volume on Village arterials such as South Colorado Boulevard, East Quincy Avenue and South Holly Street.

On site construction at the Kent Place development site is proposed to continue into next year with an estimated **completion of the retail shops in October of 2012**. The multi-family **residential portion** of the project is estimated to be **completed in the fall of 2013**. The onsite construction may cause minimal traffic delays, but is not expected to significantly interfere with normal traffic flow. Alternate routes are recommended during construction, especially through October during the height of the roadway improvement phase

# SNOW REMOVAL INFORMATION FROM PUBLIC WORKS

In spite of an extremely warm September and early October, winter is almost here; with the winter season comes snow. The City of Cherry Hills Village Public Works Department is prepared. They have developed a snow removal plan to keep the streets safe and accessible when it snows. Streets will be plowed and sanded according to established priorities. Priorities are set based on traffic volume, public safety and access to emergency facilities and schools. The goal and intent of the City is to provide timely, efficient and cost effective winter maintenance and snow removal on all the City maintained streets.

The City's policy is to have crews begin snow removal on the "mains" once accumulation has begun. The "mains" consist of **Quincy Avenue, Colorado Boulevard, Holly Street from Belleview Avenue to Quincy Avenue, Clarkson Street, Mansfield Avenue, Oxford Avenue from Dahlia Avenue east and Happy Canyon Road.** A map is available online at [www.cherryhillsvillage.com/snowremove.aspx](http://www.cherryhillsvillage.com/snowremove.aspx); scroll to the bottom of the page for the map link. If the snowfall starts after normal business hours, it is up to the discretion of the police officers on duty to contact the on-call plow drivers to begin snow removal operations. If a storm is imminent and conditions allow, the Public Works Department will pre-treat all known troubled areas with magnesium chloride prior to any snow accumulation. Once it begins to accumulate and temperatures drop, the City will be applying a salt sand mixture to the roads if necessary.

Local "residential" streets will be plowed only if more than 3 inches of accumulation has occurred during a single storm. The Public Works Department strives to have all snowfall greater than 3 inches cleared from all City streets within 24 hours from the end of the storm. Please remember that the more it snows, the longer it will take crews to plow the entire City. All City plow drivers try to keep as much snow as possible out of driveways and away from mailboxes. **Please be aware that it is the resident's responsibility to clear the snow from in front of their driveway and mailbox to ensure mail delivery.**

**There are several ways that residents can help with snow removal. First,** be aware of the snowplows working in your area and where you are driving. Be careful not to follow too closely or to block their path. If possible, let the snowplow pass before you reach the intersection. **Second,** as you shovel your walks and driveways, do not place any of the snow in the street. This can cause problems with snow removal operations and can be a hazard for other drivers. **Third,** when it is snowing or a snowstorm has been forecast, please remove your vehicle from the street. If vehicles are left in the street, plows must plow around them. This slows the snow removal operation, increases the chance of accidents and will increase the amount of snow that you need to shovel in order to move your vehicle.

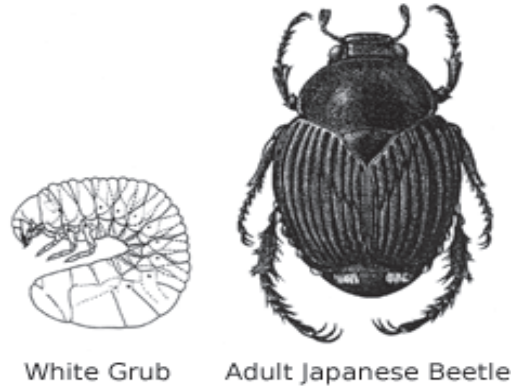
The City of Cherry Hills Village also removes snow from the City's system of hard surface trails. This includes the trails on Quincy Avenue, Colorado Boulevard and Holly Street; as well as, the sidewalks on Colorado Department of Transportation (CDOT) roads (which include Hampden Avenue, University Boulevard and Belleview Avenue). All other sidewalks in the City must be shoveled by the residents whose property abuts these facilities. There are very few sidewalks within the City of Cherry Hills Village.

Please remember that Hampden Avenue, University Boulevard and Belleview Avenue are maintained by CDOT. The City of Cherry Hills Village Public Works Department will only plow snow and apply sand to these streets if requested by the Police Department for emergency and safety concerns.



# JAPANESE BEETLE INVASION THREATENS COLORADO PLANTS & GRASSES

NOTES FROM A CONCERNED VILLAGE GARDENER



For the past ten years, Coloradoans have witnessed first-hand the horrible destruction that the mountain pine beetle has wreaked on our beautiful Colorado forests. Now, Front Range residents have a new beetle predator to fear. The Japanese Beetle, capable of causing damage as widespread and horrific as the mountain pine beetle, is now officially in south suburban Denver.

Since the Japanese Beetle's accidental introduction to New Jersey in 1916, the beetle has spread across the entire East Coast, and is now travelling west. The adult Japanese Beetle is oval in shape with a metallic coppery green color; it is 3/8 inches long and 1/4 inches wide. The destructive insect preys on plants, flowers, produce, tree leaves, and grass roots. Annually, the larvae, called white grubs, are laid in the roots of turf grass. As they mature, the white grubs feed on the roots of grass, effectively killing large portions of lawn. Once the Japanese Beetle reaches adulthood, it eats the leaves and flowers of over 300 plants, leaving nothing but thin veins behind.

The beetles release chemicals called pheromones into the air; the pheromones attract other beetles. A garden that may only have one or two Japanese Beetles, will soon have many more.

The best defense against the Japanese Beetle is a two pronged approach. When you see the beetle on plants, spray the affected plants to kill the adult beetle; this will often take more than one application. Watch for the beetle to appear on a neighboring plant; if it does, treat that plant with the insecticide. It is important to also spread an application of a dry insecticide on the lawn (in a similar manner as spreading fertilizer), in the early fall, April and the end of July. The dry insecticide will kill the larvae before they have a chance to destroy the lawn. However, if only one lawn is treated, beetles will fly from a neighbors' yard into the treated yard.

## THE JAPANESE BEETLE CAN BE ERADICATED ONLY IF THE ENTIRE COMMUNITY ACTS

Residents are urged to speak with their neighbors and consider a defensive plan to protect the community before the Japanese Beetle creates an epidemic of the same magnitude as the mountain pine beetle.

Sources:

Japanese Beetles in the Urban Landscape - University of Kentucky  
An Online Handbook for a Homeowner's Approach to the Japanese Beetle – UDSA  
Control of Japanese Beetle Adults and Home Grubs in Home Lawns - Ohio State University – Fact Sheet



## MOVIE NIGHT UNDER THE STARS 2011

On August 27, the City of Cherry Hills held its 4<sup>th</sup> annual Movie Night Under the Stars. The movie was "How to Train Your Dragon." It was a fun and memorable event with more residents attending than ever before. The evening was beautiful and calm; adults socialized and children played on the two jumping castles and ate as much ice cream and popcorn as they could handle.

Staff is looking forward to next year's event and hopes it can continue for many years to follow.



## BARN TOUR A FUN SUCCESSFUL EVENT

The Cherry Hills Village Land Preserve hosted a very successful barn tour on Sunday, September 18th. The tour was open to the public and provided an opportunity for Villagers to visit and catch up as well as view several Village barns. CHLP volunteers manned stations along Quincy and at each barn handing out a booklet and map showing the locations of the barns on the tour, and information about each barn. Many residents walked or rode their bicycles from location to location as the day was sunny, but not too warm. Barn visitation highlights included a dressage demonstration by trainer Kelly Boyd on Nikko, cart and pony rides provided by Tater Tot under the guidance of Susie Halle, horse back rides on Pat Adam's two horses (who were ridden "across town" prior to the event) and the cute miniature horses who live at the Bristow barn. Kudos to residents, sponsors, CHLP and the weather gods for making this a wonderful and successful all-Village event.



*The Radys graciously hosted at their barn*



*Lori Auttersson, right, CHLP volunteer*



*Susie Halle, Tater Tot and young resident*



*Trainer Kelly Boyd on Nikko*



*Barn scenery*



*Miniature horses at the Bristow barn*



*Rady barn*



*Pat Adam brought her 2 horses to share*



*Schoelzel Barn*





## CHERRY HILLS VILLAGE 2011 HOLIDAY TREE LIGHTING

Friday, December 2, 2011  
6:00 - 8:00 pm  
Village Center, 2450 E Quincy Ave.

**Santa**  
PICTURES WITH SANTA ARE  
AVAILABLE ALL EVENING - SO  
BRING YOUR CAMERAS



Mayor's Tree Lighting Ceremony  
Performance by Kent Denver Choir  
Reindeer Petting Zoo  
Family Hayrides with Clydesdale Horses  
Free Hot Cocoa, Apple Cider and Cookies



Don't miss this **FREE** family event  
Visit [www.cherryhillsvillage.com](http://www.cherryhillsvillage.com) or call 303-783-2744

## ADVERTISEMENTS

CRIER advertisements will be provided for a fee to Village residents and advertisers living outside the Village. Ads should be limited to 40 words and may be purchased for the entire year. **Publication does not imply endorsement.** The Crier reserves the right to reject ads. To inquire about placing an ad call Martha Welborn, editor, at 303-773-6115 (fax 303-267-0863) email [marthawelborn@gmail.com](mailto:marthawelborn@gmail.com), or mail the ad to The Crier, 2450 East Quincy Ave., Cherry Hills Village, CO 80113.

## REAL ESTATE

**EXECUTIVE SUITES FOR LEASE** - Near Cherry Hills on GV Parks and Trails. Renovated 2009. Custom Finishes & Mountain Views! Reception/Concierge Services, Conference Rooms, Kitchen, Security System, Parking, near Light-Rail and Landmark. Tenants are Cherry Hills Business Leaders. Bob Woellner 303-935-1573 [woellner@questmi.com](mailto:woellner@questmi.com).

## SERVICES

**AAA QUALITY - NEW TIRE SERVICE** - We SELL new tires and CHANGE them in a driveway, shopping center, airport ... anywhere... at a time you choose. Less than an hour. Denver's only mobile tire service. Call: **ON-SITE TIRES at 855-ONSITE-5 or 855-667-4835.**

**A Better Gardener, BALES CUSTOM GARDENING SERVICES** - Proudly serving CHV since 2004. Now scheduling Fall Services - Bed Clean Ups; Garden Maintenance; Plantings; Bulbs, Fall Annuals & Holiday Containers. Local references. Insured. Member ALCC & BBB. Free Consultations; Amy & Clint Bales 303-507-2586.

[www.BalesCustomGardening.com](http://www.BalesCustomGardening.com)

**A DESIGNER PERFECT FOR YOU!** Designer Premier matches you with the perfect interior design professional, at no cost or obligation. Personalized in-home service: Secure, Reliable and Easy. Call Marina today to find the designer "just for you." 303-916-9515; [marina@designerpremier.com](mailto:marina@designerpremier.com) and [www.DesignerPremier.com](http://www.DesignerPremier.com)

**ADVANTAGE PAINTING** - Specializing in quality interior/exterior residential painting. Prompt, professional, and very meticulous; perfect paint lines. Faux finish available. Free estimates. Color consultation. Fully insured. Local references available. Call Larry at 303-564-1306.

**AFFORDABLE BUSINESS AND RESIDENTIAL COMPUTER SERVICES** - Call A+ certified technician Bill Smyth at 303-908-5120. Tune-ups, virus removal, disaster recovery, and tutoring services. For the ten "dos and don'ts" of computer maintenance browse [www.anywhere-pc.com](http://www.anywhere-pc.com) CHV references available.

**AGAPE SENIORS HOME CARE AGENCY** provides non-medical services 24/7 for elder, disabled, adults, people who need help/housekeeping, shopping, cooking, personal hygiene, and much more. Caregivers are highly qualified, bonded, insured, carefully screened. Call us! 720-936-1888; 720-401-6387. email: [agapeseniors@aol.com](mailto:agapeseniors@aol.com)

**BEAUTIFY YOUR PLANTS** for The Holidays! IN-HOME REPOTTING of LARGE or CHALLENGING PLANTS Free Estimates/Consult. We Care/Clean/Repot House Plants. Pots & Custom Crafted Soils. Master Gardener/Community Foresters. Plant-Animal-House SITTING. Event Plant Rental. Joan/Michael CHV 303 832-8037

**BEYOND BODYWORK THERAPEUTIC REHABILITATIVE MASSAGE IN HOME** - I come to you. Feeling tired, stressed or sore from work or play? 1st time 60 min \$54.00. Deep Tissue, Swedish, Neuromuscular, Cranial, Sacral, Spinal Reflex Therapy. Call Marla Foreman 303-919-3892. ON Facebook

**CLEARVIEW WINDOW WASHING** is an insured, owner-operated company that has been in business for over 15 years. References available. Call today for a free estimate. Pat Gerlits 303-692-0620 or [pgerlits@comcast.net](mailto:pgerlits@comcast.net).

**COLORADO TREESCAPES** provides licensed and insured tree care for all of your needs; Pruning, Removals, Stump grinding, Spraying, Fertilization, Decorative lighting. Certified arborist. Please call 303-770-4155.

**COLLEGE CONSULTING SERVICES:** Kathy Miller, long-time Cherry Hills Village resident and founder of Miller Educational Consulting, provides personalized services for your child's college search, selection and application. For more information, please go to [www.millereduconsulting.com](http://www.millereduconsulting.com) or call Kathy at 303-759-2391.

**COMPUTER REPAIR** - Professional, Microsoft certified, reliable and friendly on-site service for home and business. Serving Colorado since 1995 with 30 years experience. Can also help with computer and telephone wiring. Reviews and info on our website at [www.innernetworks.net](http://www.innernetworks.net). Call Jeff at 303-432-8232.

**CONCRETE RESTORATION and WATERPROOFING-** Commercial grade; caulking, coatings, sealants, staining, epoxy. Driveways, sidewalks, patios, decks, pool areas and foundations. References. Free Estimates. Sean Henderson 720-422-4236. [www.ideal-restoration.com](http://www.ideal-restoration.com)

**CREATIVE SOLUTIONS!** Allow S.A.Hogan, Inc to address problems and repairs at your residence, including carpentry, dry wall, plumbing, electrical and painting. Licensed, insured and highly experienced; we address all issues with care and craftsmanship. Please call Scott Hogan at 303-985-1074

**DIGITAL HELP FOR SENIORS (50+)**

Computer (Mac or PC), files and folders, high speed Internet. Help buying a computer (hint: Apple). Individual tutoring on your home computer: e-mail, google, other applications. Photos: cameras thru album making. Judy at 303-757-8097 or [judyarms@aol.com](mailto:judyarms@aol.com)

**EDWARDS ELECTRIC** - Serving Denver for 28 years. All types of electrical wiring. Interior lighting. Exterior security lighting. Prompt, professional 24 hour repair service. Licensed and Insured. Don't take chances with a handyman. Free estimates. Call Brad at 303-946-3509.

**FAIRBAIRN TREE & LANDSCAPE SPECIALISTS** Designing, building and maintaining landscapes since 1993. Please call 303-722-5043.

**GREENWOOD ATHLETIC and TENNIS CLUB** - Save up to \$500 per year when you join. Greenwood is one of the entities eligible to participate in the Cherry Hills Village Recreational Reimbursement Programs. Call the Membership Department for more information. **303-770-2582**.

**HARDWOOD FLOORS - ED HOFFMAN FLOOR SERVICE, INC.** Serving the Denver Metro area for over 55 years. Quality install of all types of wood species, refinishing, custom stains, installation of wood stairs, dust containment system used. References available. Member of the BBB for over 27 years, Gold Star rating. Free estimates. Call Russ **303-429-3396** [www.edhoffmanfloorservice.com](http://www.edhoffmanfloorservice.com)

**HAVE YOUR NEW CUSTOM KITCHEN,** bathroom vanities, and cabinets designed and built by EliSons Workshop ([elisonsworkshop.com](http://elisonsworkshop.com))! Only the best materials, hardware and service!!! **FREE CONSULTATION!** Call Tamas at **720-217-5755** or Ben at **720-217-6542** or email to [bence@elisonsworkshop.com](mailto:bence@elisonsworkshop.com)

**HIGHEST QUALITY HOUSE CLEANING AND VACANT HOME CARE SERVICES** - Reliable and immaculate residential cleaning at reasonable rates, according to house size, beds/baths and cleaning condition. Over 10 years experience. Will also provide exceptional care for homes left vacant for prolonged time periods. Excellent references available upon request. Call Marta and Bartosz **720-937-6902**.

**HORSE CARE** - Horse crazy knowledgeable local woman available to feed/ride/provide equine related care. References. Please contact Rebecca at **720-530-7078**.

**HOSTESS REFLECTIONS** - GREAT IDEA! Relax and enjoy your own party - one person to full staff. We will open the door, tend to the kitchen, bar, serve, plus full clean-up. Experienced. References. Cindy at **303-757-7542**.

**HOUSEWORKS HANDYMAN SERVICES** - An experienced, local, neighborhood handyman offering repair, installation, and odd job services. Work is professional and precise. Free estimates & refs available; bonded and insured. Call John House at **720-373-1184** or **303-388-1462**.

**MAPLE LEAF LANDSCAPING, INC.** - Full Service Landscape Company: Lawn Care, Garden Maintenance, Irrigation Installation & Repair. Hardscape & Design Construction Projects. Please call Darwin Wasend at **720-290-8292**. Free estimates! Serving CHV since 1999. **BBB Member**.

**MASTER ELECTRICIAN** - Reliable, Friendly, Cost Effective Electrical Services. Owner Operated/Licensed/Insured, 25 years experience. Specializing in Outdoor Landscape Lighting and Design. See the difference lighting enhancements can make...excellent Cherry Hills references! Noble Place Electric, LLC, Dave Lagesse, **303-803-8211**. [contact@noble-electric.com](mailto:contact@noble-electric.com).

**MOVING? MOVE WITH A NEIGHBOR** - Jim Johnson, Johnson Storage & Moving Co, a United Van Lines agent. Specializing in Local, Interstate, and International Moving & Storage since 1900. Jim at **303-785-4343**.

**PREMIER PAINT WORKS SINCE 1993** - Denver's Residential Paint Specialists. Interior/Exterior. Neat, conscientious craftsmanship by polite, punctual, respectful, honest & fully insured crew; impeccable references. Ask about our **FREE** 1 hour color consultation with Jennifer from [thecolorpsychic.com](http://thecolorpsychic.com). Call John at **303-864-9247**.

**PRIVATE ESTATE PROPERTY MANAGEMENT AND ESTATE GARDENER** - Landscaping, Irrigation, Water Features, Arbor Care, Custom Shearing, Insect Control, Fertilization, and Lighting. All Handyman Services, Floral Design and Auto Care. Passion for Detail. References. Contact Mat at **720-339-8858**.

**PROFESSIONAL CLEANING by 1st CLASS CLEANERS** - Accepting new clients. We offer a very complete and exceptional cleaning service. References and referrals upon request. Attention to DETAILS is our speciality. Honest, reliable and flexible schedule. Call Ana at **303-882-2743**.

**RODGER THE WINDOW WASHER** - You won't find anyone better. Someone your friends and neighbors trust. Policy information for liability, medical, disability and auto insurance supplied with all bids. Call Rodger with any questions or just to say "Hello!" **303-474-4494**.

**RUSS LAUNER PAINTING INC. LLC** - 25 years in business. Quality Work. Professional. Courteous. References Available. Insured. Look forward to your call. Contact Russ at **303-979-3705** or **303-503-4438**.

**SILVER SERVICE WINDOWS** - Residential window washer in business for twelve years. Owner operated, insured and references available. Free in person estimate. I return calls in 10 minutes or less. **10% Discount for new customers**. Rick Otto at **303-613-0727**.

**SPRINKLER BLOW OUT, YARD CLEANUP AND SNOW REMOVAL** - Mowing, Tree and Shrub Trim, Gutter Clean Up, Sprinkler System Installation & Repair, Fence Installation & Repair, Draining Installation and Repair, Landscape and Lawn Services, Handyman Services. Call Walter at **720-366-5498**.

**SWEENEY PAINTING & DECORATING** - Fine Interior Painting and Faux Finishes. Color consultation and Exterior Painting. 32 years experience. Contact us at **303-470-9019**. Visit us at [www.SweeneyPainting.com](http://www.SweeneyPainting.com).

**TAYLORED GARDENS** - Container gardening. Perennial beds. Weekly maintenance available. Colorado Master Gardener. Call Cindy at **303-757-7542**.

**WALLPAPER REMOVAL** - Off the Wall, too! Remove unwanted wallpaper in any room. 20 years experience! Call Betsy for a free estimate at **303-870-3110** or [betsybernardine@yahoo.com](mailto:betsybernardine@yahoo.com)

**YOUR BEST FRIEND'S FRIEND** - Dog Walking, Pet Sitting, Pet Chauffeur, Pet Errands. Janice Fehrman, Owner/Founder. Now offering in home/overnight care, too. **303-692-1140** or [www.ybffpetcare.com](http://www.ybffpetcare.com) or [janiceybff@aol.com](mailto:janiceybff@aol.com) or [contact@ybffpetcare.com](mailto:contact@ybffpetcare.com)





## CHERRY HILLS VILLAGE ELEMENTARY CORNER



**Molly Drvenkar** is the new CHVE principal.

This fall, Cherry Hills Village Elementary welcomed **Molly Drvenkar** as the new principal. Principal Drvenkar joins the staff of CHVE after a two year hiatus with her children - she has a 4 year old and a 2 year old; prior to her time with her family, she was principal of Bellevue Elementary from 2005 – 2009. Principal Drvenkar has spent the majority of her education career in the Cherry Creek School District. Aside from her experience as a principal, she has also been a classroom teacher, a writing specialist, and an assistant principal.

Principal Drvenkar's goals for CHVE include meaningful staff development by providing resources and support for CHVE educators, bolstering student and school safety, and addressing bullying through classroom 'Caring Communities.' She plans to maintain high expectations for student achievement, and is impressed with how invested the parent community is in CHVE and with its teachers.

Principal Drvenkar's leadership philosophy focuses on nurturing school relationships: student to teacher, teacher to parent and parent to parent with the principal and staff involved at all levels. She wants everyone involved with the education of the children at CHVE to be responsible for the school's energy and to work in a collaborative way for the success of CHVE for this year and years to come. She looks forward to embodying the Cherry Creek School District's mission at CHVE: "To inspire every student to think, to learn, to achieve, to care."

## PASSINGS

Long time resident, **Georgianna Tamblyn**, passed away on June 30th at age 95. She was preceded in death 11 years ago by her husband of 64 years, Harold Tamblyn. She is survived by a brother, three children, seventeen grandchildren, and great grandchildren.

The Village sends condolences to the Tamblyn family.

## CHERRY HILLS VILLAGE BABYSITTERS

*The Crier offers the following list as an information service only. The Crier does NOT review babysitter qualifications; Villagers must screen babysitters themselves.*

*\* Indicates Pet and Plant care \*\* Indicates housesitting*

McKenna Adams*	5251 Sanford Circle East	303-759-8322
Claire Bailey*	5840 Southmoor Lane	303-733-2025
Blaine Barsch	3777 S. Albion St.	303-621-4147
Ellie Bauer	68 Glenmoor Drive	303-808-5185
Meghan Beans	#5 Viking Drive	303-789-1999
Molly Beans	#5 Viking Drive	303-789-1999
Walker Crowley *	** 4051 South Ivy Lane	303-990-0457
Chelsea Davidson	2230 E. Grand Ave.	303-520-9727
Colby Donaldson**	1920 E. Chenango Ct.	303-834-0231
Kristin Douglass	2450 Cherryridge Rd.	303-762-0080
Katelin Edwards	3700 S. Ogden St.	303-653-8354
Caroline Field*	4090 S. Clermont St.	303-691-5679
Katherine Field*	4090 S. Clermont St.	303-691-5679
Sibel Fite*	17 Mockingbird Lane	303-862 0906
Blair Gilpatrick **	29 Charlou Drive	303-806-9018
Nicole Honnen*	15 South Lane	303-819-4841
Tylor Hopkins*	1199 E. Layton Ave	720-300-4625
Samantha Kagan	52 Cherry Hills Farm Dr.	720-519-0621
Abbie Kagan*	52 Cherry Hills Farm Dr.	720-519-0621
Hayley Kal	4255 So Bellaire	303-692-1112
Samantha Kal*	4255 So. Bellaire	303-692-1112
Camran Kazemian* **	24 Martin Ln	303-783-1333
Davis LaMair*	16 Cherry Lane Drive	303-584-0601
Kate La Mair*	16 Cherry Lane Drive	303-584-0601
Emily Matthews*	1190 E. Kenyon Ave.	303-781-6777
Will Matthews*	1190 E. Kenyon Ave.	303-781-6777
Carter McGrath* **	5771 Charlou Dr	303-220-5636
Brook McIntyre	4730 S. Lafayette St.	303-789-1263
Haley McCloud**	4910 So. Franklin St.	303-788-1472
Katie Mullen	3715 S. Gilpin St.	303-803- 8150
Molly Murphy*	1015 E. Tufts Ave.	303-347-7508
Emma Murphy*	1015 E. Tufts Ave.	303-347-7508
Phoebe Nielsen*	4061 So. Cherry Street	303-758-8702
Lexi Pavlakis	9 Sterling Ave.	303-761-6183
Cameron Reiss	4789 So Dahlia	303-810-3396
Elizabeth Schwartz	2135 E. Grand Ave.	303-886-7431
Danielle Sellers*	2115 E. Grand Ave.	303-781-8822
Griffin Sutherland**	4229 S. Bellaire Circle	303-781-3077
Emma Sveen	2115 E. Grand Ave.	303-761-7757
Gunnar Sveen	2115 E. Grand Ave.	303-761-7757
Dylan Tallian*	11 Lynn Road	303-761-4162
Erika Tiemeier*	3855 So Dahlia	303-757-1142
Madilyn Turken	4020 S. Dexter St.	303-753-2367
Lili Valis	48 Sedgwick Drive	303-761-8405
Annabel Wall	5600 East Oxford Ave.	303-765-0620
Monica Wang * **	14 Cherry Hills Farm Dr	303-881-8508
Erin Windfeldt*	7 E. Bellevue Pl	303-761-9619

**PLEASE** help us by **updating** your son's, daughter's or neighbors' information if they are no longer available or have moved away. Contact Martha Welborn at 303-773-6115, fax 303-267-0863, or email [marthawelborn@gmail.com](mailto:marthawelborn@gmail.com).