

# the VILLAGECRIER

May 2025 Newsletter



cherryhillsvillage.com



Photo by: City Staff

## MAY

### In this issue:

Welcome Our New K-9 Officer to the Team .....	1
Graduate Information Needed .....	2
Our Easy-to-Use Crime Map IS NOW LIVE! .....	2
School Graduations .....	2
Mitigate Crime .....	2
Mayor/Council Report .....	3
Crier Classifieds .....	4
Cherry Hills Land Preserve Events .....	5
How Sweet It Is .....	6
Bee Swarm Hotline .....	6
2025 Spring Clean-Up .....	6
Tree Donation Program .....	7
Fishing at John Meade Park .....	7
City Road Maintenance .....	7
Kent Denver Events .....	8
St. Gabriel Episcopal Church Summer Events .....	8
Babysitter's List .....	8

cherryhillsvillage.com

Newsletter design by AMGraphix  
Anne Marie Martinez / amgraphix1@gmail.com

## Welcome Our New K-9 Officer to the Team

The Cherry Hills Village Police Department proudly announces the newest addition to the force: K-9 Officer Shadow. He and his partner Officer Anderson started their intensive K9 training in mid-April and will be there for the next 12 weeks. Upon completion of the K9 academy, the team will assist with a variety of law enforcement tasks, enhancing public safety, advanced scent detection, tracking abilities and supporting investigations with criminal apprehension.



## Graduate Information Needed

If your child will graduate this summer and you would like to announce it, please send the information to *The Village Crier* so we can share the good news with the community. You can submit graduate information by email to Laura Gillespie at [lgillespie@cherryhillsvillage.com](mailto:lgillespie@cherryhillsvillage.com).

### Please include:

- Graduate's name
- Parent's name(s)
- High School Graduate:
  - School student graduated from
  - Plans after graduation
    - If attending college please provide name of school and area of study, if known

### College/Graduate School Graduate:

- School student graduated from
- Degree information
- Plans after graduation
  - If continuing education please provide name of school and area of study

**The deadline for submissions is May 15<sup>th</sup>**

*Graduate information will be published in the June edition of the Village Crier.*

## SCHOOL GRADUATIONS

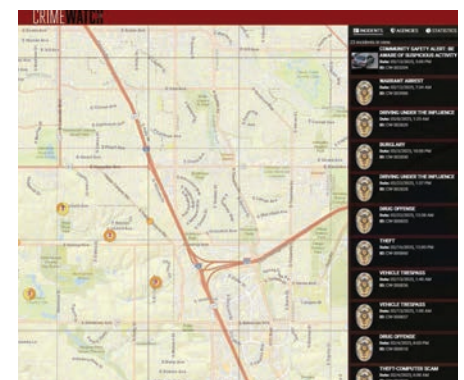
May 17th	May 23rd	May 30th	June 1st	June 2nd
St. Mary's Academy	Cherry Hills Village Elementary last day of school	St. Mary's Academy	Kent Denver	Kent Denver
Graduation (10am-noon)		Continuation (9am-10am and 1pm-2:30pm)	Continuation (9am-11am)	Graduation (9am-noon)

## Our Easy-To-Use Crime Map IS NOW LIVE!

At Cherry Hills Village Police Department, we value community engagement and collaboration. To continually improve in these areas, we're introducing a new Crime Map on **CHVPD.com** — an easy-to-use tool designed to provide accessible information to our residents. The Crime Map allows you to filter by incident types, click for more detail, and to assist in providing information with the "Submit A Tip" function. By submitting a tip through the mapped incidents, you help reinforce the valuable connection between the community and our police department.

"This quick, visual reference map is one of the many tools we use to continue sharing information with our community," said Chief Jason Lyons. "This online feature is just one example of how we integrate technology while providing top tier police services for all who visit and for those who call Cherry Hills Village home."

Locations of crime are primarily displayed by major cross streets or general locations rather than specific addresses to protect the integrity of open investigations.



## Please do your part to mitigate crime

Follow these simple steps:

- 🔒 Remove keys and valuables from vehicles
- 🔒 Lock vehicle doors
- 🔒 Close the garage door
- 🔒 Close and lock exterior doors
- 🔒 Turn on alarm and exterior lights
- 🔒 Report suspicious activity





# MAYOR/COUNCIL REPORT

## Navigating Our Roads: Addressing Traffic Concerns in Cherry Hills Village



One of the most frequent and pressing concerns that City Council hears from our community is the issue of traffic within Cherry Hills Village. Whether it's the morning and afternoon congestion around our schools, the backups at the City's edges during peak commuting hours, or the frustration with cut-through traffic, we know that traffic impacts your daily lives and the peaceful character of our Village.

I want to assure you that City Council and staff recognize the validity of your concerns about increased noise, the difficulty of navigating our own streets during busy times, and the impact of external traffic flowing through our residential areas. We also understand the diverse perspectives within our community, with some residents feeling that congestion is acceptable because it deters cut-through traffic, while others prioritize smoother flow for all.

The reality of our traffic situation is complex, stemming from a unique set of circumstances. As a small, semi-rural, single-family home municipality bordered entirely by larger cities and their major thoroughfares, we are inherently impacted by traffic patterns beyond our direct control. The three schools within our Village, while valued community members, naturally generate significant traffic during their arrival and dismissal times. Furthermore, the regional commuting patterns on the CDOT-controlled roads that border us create bottlenecks that inevitably spill over onto our local streets.

One particularly frustrating aspect is the role of navigation apps. While these tools aim to optimize individual travel times, their algorithms often direct drivers through Cherry Hills Village as a perceived shortcut when surrounding arteries become congested.

This can undermine any efforts made to improve local traffic flow and contributes significantly to the cut-through traffic that many residents find disruptive.

We also acknowledge the community's historical reservations regarding certain traffic management solutions, such as traffic circles and traffic lights. We respect these preferences and understand the desire to maintain the unique character of our Village. However, this also presents a challenge since many conventional traffic mitigation tools not favored by our residents are not available to us.

Our ability to directly influence the traffic on the CDOT-controlled roadways at our borders is limited. While City staff maintains regular communication with CDOT, their priorities often align with optimizing regional traffic flow, and adjustments to signal timings at intersections bordering our City are typically minimal, and often CDOT will not agree to any adjustments. Similarly, while we can (and do) collaborate with our schools on traffic management plans, their enrollment decisions and operational procedures are ultimately their own. In addition, the City's ability to enforce our land use regulations with our community churches and church-affiliated schools are limited under the Religious Land Use and Institutionalized Persons Act (RLUIPA), underscoring the need for respectful and collaborative engagement.

Given these constraints, what can be done? We believe our path forward involves a multi-pronged approach focused on:

- **Comprehensive Data Gathering and Analysis:** We are committed to gaining a deeper understanding of our traffic patterns through data collection. This includes analyzing peak times, identifying key congestion points, and attempting to quantify the extent of cut-through traffic. The last comprehensive traffic study was done in 2016 and City Council believes such a study should be done at least every ten years in order to assess changing traffic patterns. This data will be crucial in informing any potential actions.

- **Exploring Solutions Within Our Jurisdiction:** We will continue to explore and evaluate potential traffic management strategies that fall within the City's control and are sensitive to the character of our Village. This may include optimizing signage, reviewing local ordinances, and investigating neighborhood traffic calming measures that have community support.
- **Strengthening Partnerships:** City staff will continue to engage in dialogue with CDOT to advocate for any feasible adjustments that could alleviate pressure on our local roads. We will also continue to work collaboratively with our schools to explore opportunities for optimizing their traffic flow management within their operational frameworks.
- **Open Communication and Transparency:** Last but certainly not least, we are committed to keeping you informed about our efforts and the challenges we face. This article is but one step in that direction, and we will continue to provide updates through The Village Crier, our website, and potentially through public forums dedicated to this issue.

There are no easy answers to our traffic challenges. However, City Council is dedicated to actively listening to your concerns, thoroughly investigating the issues, and diligently pursuing any viable solutions within the limitations we face. We believe that through a collaborative approach, grounded in data and open communication, we can work together to mitigate the impact of traffic on Cherry Hills Village.

We encourage you to stay engaged in this important conversation as we move forward.

---

*Earl Hoellen*

Mayor Pro Tem, District 2

[ehoellen@cherryhillsvillage.com](mailto:ehoellen@cherryhillsvillage.com)

303-489-5051

# Crier Classifieds

The Village Crier advertisements will be provided for a fee to both Village residents and advertisers outside the Village. Ads are limited to 45 words. **Publication of the ad in The Village Crier does not imply endorsement.** The Village Crier reserves the right to reject ads. For information about advertising visit [www.cherryhillsvillage.com/VillageCrier](http://www.cherryhillsvillage.com/VillageCrier).

## Categories

**Attorney**  
**Contract Work/Handyman**  
**Education**  
**Events**  
**For Sale**  
**Gardening/Landscaping**  
**Health and Wellness**  
**Music/Instrument/**  
Education/Repair  
**Painting**  
**Pest Control**  
**Pet Services/Accessories**  
**Professional Services**  
**Real Estate**  
**Tech Help/Services**  
**Wildlife Service/Removal**

**ADVERTISE in the next  
Crier Classifieds**

Email your information to  
Laura Gillespie at  
[lgillespie@cherryhillsvillage.com](mailto:lgillespie@cherryhillsvillage.com)

**Deadline: May 15**

## Contract Work/Handyman

**A+ ACCREDITED: HIGH IMPACT ROOFING** – Trusted by dozens of Cherry Hills homeowners, we specialize in repairs and full replacements. Protect your home with a premium High Impact roof - the last roof you'll ever need, guaranteed never to leak. Call 720-515-4672 or visit [highimpactco.com](http://highimpactco.com)

**CLEARVIEW WINDOW WASHING**  
Clearview Window Washing is an insured, owner-operated company that has been in business for 30 years. Call or text for a free estimate. Rob Johnston 303-638-1502

**WINDOW CLEANING** by Patrick's Window Shine. Come have Patrick and Ted clean your windows today! We also clean screens, rain gutters, chandeliers, skylights, outdoor lighting, solar panels and more. Call, text or email for your free estimate. 303-710-9585 or [patrickwindowshine@gmail.com](mailto:patrickwindowshine@gmail.com).

## Education

**MATH TUTORING GRADES 7-12.**  
For 35+ years and over a decade online, my private students earned the highest grades and SAT/ACT scores. Taking AP Precalculus? Precalculus is a specialty! Written endorsements from top professors and admissions officers. Dr. George, Harvard Ph.D., MIT B.S. 833-628-4833.  
[perdocere.com](http://perdocere.com)

**MY SCHOOL PRESCHOOL** – A private preschool experience-based learning where children participate in intentional experiences in the classroom, gym, art room & playground with monthly in-house field trips. For ages 2.5 to 5 years. 5555 South Yosemite Street, Greenwood Village, 80111 Contact: [MSPreschoolDirector@myschool-preschool.org](mailto:MSPreschoolDirector@myschool-preschool.org) 303-806-5127 Website: <https://myschool-preschool.com/>

**PIANO LESSONS WITH PEDER SILL!** Masters degree in Piano Performance from DU, 12 years private teaching experience. High quality instruction in technique, theory, and artistry. Form a lasting relationship with music through kindness, and discipline:) Call, text, or email at 217-691-9347 or [Peder.a.t.sill@gmail.com](mailto:Peder.a.t.sill@gmail.com)

## Gardening/Landscaping

**DAN FAIRBAIRN LANDSCAPE/SPRINKLERS** has over three decades of expertise in landscaping and sprinkler system services in Cherry Hills. For a free consultation on a custom, high-quality solution, call Dan 303-888-4654.

**FAIRBAIRN DESIGN-TREE AND LANDSCAPE SPECIALISTS** designing, building & maintaining landscapes in CHV since 1993. Please call/text Jim for a free consultation at 303-919-2208 or email at [jimfairbairn@comcast.net](mailto:jimfairbairn@comcast.net)

**MAPLE LEAF LANDSCAPING, INC.** – Design, Garden Maintenance, Irrigation installation/Repair, Hard-scape & Landscape Construction. Please call 720-290-8292.  
[Mapleleaflandscapingdenver.com](http://Mapleleaflandscapingdenver.com). Serving the Village since 1999. ALCC & BBB

## Health and Wellness

**AT GOOD INTEGRATIVE HEALTHCARE**, we're here to help you find your version of good. With a focus on hormone optimization, medical weight loss, sexual function and thyroid optimization, we aim to deliver personalized, holistic care. New patients receive a complimentary consultation! 720.815.9479 or [goodintegrativehealthcare.com](http://goodintegrativehealthcare.com)

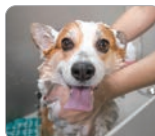
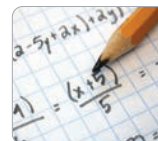
**BETTER H2O** without microplastic perils, from your kitchen tap. 'Restructured' to resemble taste and purity of natural spring water, Alkal-Life™ is mineral rich (not RO) you dial the alkalinity with purpose. Get the free guide <https://www.TamJohn.com> or call 720.318.9121 Daisy Fields Co. FDA certified.

## Pet Services/Accessories

**DOG GROOMING \*\*\* MOBILE \*\*\* I COME TO YOU - THE POOCH MOBILE DOG WASH** - All breeds, large or small, welcomed and loved. Pooch Mobile is fantastic, low stress for both you and your dog(s). You'll love it! Please call Robert anytime at 720-480-1560.

**DOG WALKING, HOUSE CALL PET NAIL TRIMS & MORE!** - Furry Paws Care is a small pet care business that has been serving the community since 2014. Our services are: Nail Trims, Horse/Livestock Care, Dog Walking, Pet Sitting & More! Contact Amy via [furrypawscare.com](http://furrypawscare.com) or 303.903.6327.

**HERITAGE MOBILE GROOMING** offers luxury dog grooming to monthly clients, which means we come to your house every month to groom your pup in our self-contained mobile unit. All-Breeds, 40 years' experience, gentle, professional care. [HeritageMobileGrooming.com](http://HeritageMobileGrooming.com) Call Vickie 303-646-7313 or Text 720-580-4251.



## Professional Services

**DISCOVER COMPASSIONATE ELDERLY CARE ASSISTANCE:**  
Assistance with daily tasks, companionship, personal hygiene, medication management, transportation, light housekeeping, and laundry. Contact TG at 720-276-8713 or email [tturi@graceonus.com](mailto:tturi@graceonus.com) for exceptional care that promotes well-being and independence. Experience the difference today!

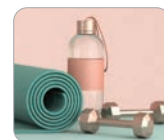
**DRIVEDENVER CAR SERVICE**  
PUC licensed, insured private executive SUV transportation, professional drivers, owned by Colorado natives Peter and Debra Scifo. One way and round-trip private and corporate transportation to DIA, concerts, sporting and social events, and more. Contact us: Call/text 303.717.8113 Email [debra@drivedenvercarservice.com](mailto:debra@drivedenvercarservice.com) [drivedenvercarservice.com](http://drivedenvercarservice.com)

**TEAK REVIVAL** provides high quality restoration, repair and maintenance of new and older Teak, lpe and wood outdoor furniture. The sealer applied was developed for teak decks of yachts, allows wood to breathe, looks great and lasts for years. 303-386-0072, email [teakrevival@gmail.com](mailto:teakrevival@gmail.com), website [teakrevival.com](http://teakrevival.com)

**THE ANTIQUE TRADER** since 1965. CHV residents since 1984. Fair market value/insurance appraisals. Estate appraisals/estate sales. Purchasing: costume, fine jewelry and sterling silver; Native American jewelry, rugs, pottery and artifacts; art and objects of virtue. Jack Wartell 303-722-6098 & Judy Wartell 303-919-5673 [antiquetraderappraisals.com](http://antiquetraderappraisals.com) or [jack.wartell@gmail.com](mailto:jack.wartell@gmail.com).

## Wildlife Service/Removal

**ANIMAL DAMAGE CONTROL** for wildlife problems of all sizes. Licensed and insured. We have been servicing Cherry Hills Village for over 30 years. Professional, ethical and humane, we don't use gasses, poisons or pesticides. 303-884-9100, [wildlifedamage.com](http://wildlifedamage.com) or [adcwildlifespecialist@gmail.com](mailto:adcwildlifespecialist@gmail.com)



FIND US ON THE WEB: [cherryhillsvillage.com](http://cherryhillsvillage.com)



# Quincy Farm's Big Barn Renovation:

Sunday, June 22, 2025 | 11:30 am–1:30 pm

# GRAND Reopening



Celebrate the grand reopening of the beautifully renovated Big Barn at Quincy Farm with a one-of-a-kind event you won't want to miss!



**HawkQuest** – Get up close and personal with a live eagle, hawk, falcon and owl

**Face Painting** – Kids will love the nature-inspired face painting

**Mile High Sliders** – Enjoy a slider or two from one of Denver's premier food trucks

**Kate Hogan** – Our favorite naturalist returns to the Farm to share her knowledge of birds and mammals

**Barn Stall Art Display with local artists** – In collaboration with the Cherry Hills Village Art Commission

**Kids Art Show** – Kids art show featuring some award-winning local school artists

**Register Now!**

[quincyfarm.org/programs](http://quincyfarm.org/programs)

## Other Upcoming Programs & Events at Quincy Farm

Speaker  
Event

**May 29**  
5:30 pm



### *Envisioning the Future:*

#### *Collaborative Management Plan of the High Line Canal's Natural Resources*

Presenting Harriet LaMair, CEO Highline Canal Conservancy, Laurel Raines, President and Co-founder Dig Studio, and Susan Sherrod, Senior Ecologist, Biohabitats. Wine served. For adults.

Herb  
Garden  
Workshop

**June 5**  
5:00 pm



### *Cultivating Your Own Potted Herb Garden*

Devon Hukill of Deep Rooted Garden and Design

Learn how to cultivate a variety of herbs for flavoring and garnishing your favorite dishes and the essential care techniques to keep them healthy and vibrant. Wine served. For adults.

Birding  
Walk

**June 8**  
8:00 am



### *Discover the Beautiful Birds Living in Our Community*

Barbara Masoner, Denver Audubon

Led by longtime Denver Audubon volunteer, Barbara Masoner, we'll search for birds and owls perched up high in the tree canopy and see who's treading water in the pond. For adults.

Kids' Art  
Workshop

**June 11**  
3:00 pm



### *Young at Art: Nature Impressions*

Julie Bennett, Cherry Hills Village Elementary's art teacher

Join us for a whimsical art workshop at Quincy Farm, where imagination meets the great outdoors! For families.

Blooms &  
Blossoms

**June 18**  
5:00 pm



### *A Flower Arranging Workshop*

Cindy Overhardt, formerly with Flower Power

Get creative at a workshop on how to assemble show-stopping everyday floral arrangements. For adults. Wine served.



CHERRY HILLS LAND PRESERVE

**Register Now!**

Please visit [www.quincyfarm.org/programs](http://www.quincyfarm.org/programs)



Quincy Farm

# How *Sweet* It Is

By Heide Dolan, Colorado Master Gardener

Fresh, homegrown tomato season is edging toward us, and the serene sighs of summer lie just around the corner. Searching for that sweet, yet perfectly balanced, tastiest tomato to grow is a perpetual quest for tomato growers. Did you know there is a scientific way to measure a tomato's sweetness? Did you know, too, that curious home gardeners can obtain this device without breaking the bank?

While scientists have used refractometers for years to measure sugars in things like wine, these same devices can also be used to measure tomatoes' Brix. Brix is a word for sugar content in simplified scientific terms. It doesn't tell the whole story about tomato taste, but Brix content is certainly a piece of the puzzle. Overall, Brix levels in fruit are dependent and vary based on plants' specific genetics, nutrient-dense soil quality, the weather, and also the time of the season when you test. Higher Brix levels happen at peak season and Brix tapers down, sometimes rapidly, as summer ends.

The process of measuring Brix is simple. Calibrate your refractometer according to manufacturer's specifications. Select ripe fruit to test at peak season when conditions are best. Cut the fruit and squeeze a drop of juice into the open meter window. Boom! A number will display. With tomatoes, that number runs anywhere from 3, for a very tart tomato, all the way to 12 for a very sweet one.

Refractometers are quite compact and can be digital or traditional handheld devices that produce results by looking through a tube to a shaded graph where you can read the levels. Digital models are the simplest and easiest to use when you have gooey hands. Many models of different sophistication and sensitivity levels are available at almost any price point.

Home gardeners who are curious may want to know that size counts here! Cherry tomatoes are the smallest, sweetest and have the highest Brix levels. That Supersweet 100 cherry tomato plant you are eyeing at the nursery is, in fact, sweeter than others! Typical cherry tomatoes run Brix levels of 7-12. Roma type tomatoes, such as San Marzano, are generally referred to as pastes. They are fleshy, but not overly sweet with a nice balance of acidity. We all can appreciate that this balance is necessary for a deep tomato sauce. You wouldn't want a Brix of 10 in a Roma for just that reason. Brix levels of 3.5-4.5 are a pretty good benchmark for paste tomatoes. Larger tomatoes typically also have lower Brix contents. Beefsteaks and Oxheart tomatoes can vary greatly in sugar levels. Some popular tomatoes like Cherokee Purple or Kellogg's Breakfast usually run between 5.5-8 Brix.

At this time of year, as we crave a sweet, slobbery, sun-warmed tomato straight off the vine, think about using a new garden gadget – the refractometer. It's a fun process to measure and record the sweetness of America's favorite fruit – the homegrown tomato.



If you are lucky enough to witness one of nature's most fascinating migrations, a swarm, **DO NOT ATTEMPT TO KILL THEM!**

Do not spray them with insecticide or water! These bees are "survivor bees" and are crucial to our environmental health. Call the toll-free

**BEE SWARM HOTLINE  
(1-844-SPY-BEES)**

We have volunteer beekeepers throughout the state ready to be dispatched to collect the bees and transfer them to a new home.



## 2025 Spring Clean-up May 17th



The 2025 Spring Cleanup will be held on **May 17, 2025 from 9:00 a.m. to 2:00 p.m.** The Spring Clean-up event will be held at 2101 W Quincy Avenue, Sheridan, CO 80110 (the Public Works facility in Sheridan). The Spring Clean-up event this year will include shredding and electronics recycling. This program is for residents only and City staff will be checking ID's. *Please be prepared to show your driver's license with a Cherry Hills Village address.* City Staff will be available to help unload acceptable items on May 17th. Details about accepted items will be available in upcoming Village Crier issues and on the website. If you have any questions regarding this event, please visit the City's website at <https://www.cherryhillsvillage.com/197/Spring-Clean-Up> or call (303) 783-2744.





# Tree Donation Program

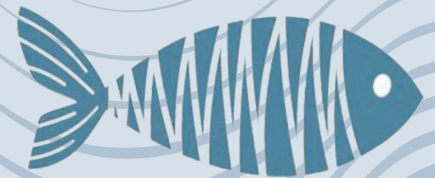
Did you know that Cherry Hills Village has a Tree Donation Program? This program allows friends and families to donate and dedicate trees in honor or memory of a loved one. The individual or family to whom the tree is dedicated must have some connection to Cherry Hills Village. Tree donations will be considered for all parks, trails and open spaces within the Village, upon approval of a suitable location by Village staff. The donor can work with staff to determine a species of tree that is mutually acceptable and appropriate for its location. Tree caliper will be a minimum of 2". Village staff works with donors to select a species of tree that is acceptable for the setting. Trees may be recognized with a plaque. The design of memorial plaques is established by the Village to promote consistency in cost, size, type and mounting.

Tree donation fees are \$1,000. This includes the cost for the tree, plaque, planting, and future maintenance. The Parks Division will provide care for the tree as needed throughout its lifespan. Donations are first presented to the Parks, Trails, and Recreation Commission for consideration and then to City Council for final approval. For more information, please contact Parks Project & Operations Manager Emily Black at [eblack@cherryhillsvillage.com](mailto:eblack@cherryhillsvillage.com).



# Fishing at John Meade Park

Both ponds at John Meade Park are open for fishing! Two piers were installed in the park during the renovations, and both ponds were also dredged to remove muck and provide healthier habitat. Colorado Parks and Wildlife stocks the ponds for the City. So far, the ponds have been stocked with bluegill and largemouth bass. The ponds are catch and release, and anyone age 16 and up should have a valid fishing license.



## CITY ROAD MAINTENANCE

### Pavement Maintenance

Pavement maintenance is a crucial aspect of the City's infrastructure management and ensures longevity, safety, and functionality of our roadways. Timely maintenance involves regular inspections, prompt repairs, and preventive measures to address potential issues before they escalate into major problems. By implementing a proactive maintenance strategy, the City has extended the lifespan of its pavements, reduced repair costs, and enhanced the overall network in a fiscally responsible manner.

The primary goal of timely pavement maintenance is to prevent the deterioration of the pavement structure to avoid premature failure. Factors such as weather conditions, traffic loads, and environmental influences can cause wear and tear over time. Common issues include cracks, potholes, surface wear, and drainage problems. Addressing these issues promptly can prevent further damage and avoid costly, extensive repairs or replacement in the future.

Preventive maintenance techniques that have been adopted by the City, such as crack sealing, timely pothole repair, chipseal, and mill-and-overlays to preserve pavement integrity. These methods help protect the pavement from water infiltration, UV damage, and other environmental stressors. Additionally, regular inspections and condition assessments allow for the early detection of potential problems, enabling timely interventions.

- **Crack Sealing** is a maintenance process used to extend the life of roads by preventing water and debris from entering cracks in the pavement. The City performs this maintenance in-house on a year round schedule as time and weather allows.
- **Chipseal** is a pavement surface treatment that combines one or more layers of asphalt with one or more layers of fine

aggregate to provide a thin ¼ to ½ inch wear layer on existing asphalt. This treatment lasts 7 to 9 years and can be applied several times to roads that are in relatively good condition.

- **Mill-and-Overlay** is a street maintenance technique that requires the removal of the top layer (2") of a street utilizing an asphalt mill machine. After the top layer is removed, a new layer of asphalt pavement is put in its place. This can fix imperfections in the surface as long as the base layer is in relatively good condition and the subbase is not compromised.

### Right-of-Way Permitting

The City utilizes an Integrated Pavement Management System (IPMS), which is a wholistic approach to maintaining our pavements consistently and fiscally responsibly. There are a number of factors that affect individual sections of pavement that are monitored and utilized, causing staff to continually update and change each year's street improvement priorities. One of the most disruptive factors that we encounter are utility cuts. The City has adopted a right-of-way (ROW) permitting program that is designed to help preserve and protect our streets and the tax dollars we utilize to improve these assets.

The permitting system is designed to hold those responsible for damaging asphalt accountable by requiring specific repair methods when working in and cutting public streets. Utility cuts play a major role in premature deterioration and failure in pavement structure. We also exchange information with utility companies such as Xcel and Denver Water to coordinate the upcoming work they have scheduled for the upcoming year(s) and plan our road maintenance accordingly when possible.

By consistently enforcing our ROW regulations we are proactively helping extend the life of our roads and saving costs in the long run.



# the VILLAGECRIER

[www.cherryhillsvillage.com](http://www.cherryhillsvillage.com)

Phone: 303.789.2541

Fax: 303.761.9386

Police: 303.761.8711

email: [village@cherryhillsvillage.com](mailto:village@cherryhillsvillage.com)

PRSR STD  
U.S. POSTAGE  
**PAID**  
DENVER, CO  
PERMIT NO. 331

MAY 2025 Newsletter

## KENT DENVER EVENTS JUNE

**20 FRIDAY**  
10:30am / 6:30pm

**21 SATURDAY**  
2pm / 6:30pm

**Shrek Jr. - The Musical**  
Anschutz Family Theater

**28 SATURDAY**  
12pm

**Where the Wild Things Are - A Musical with a Twist**  
Black Box Theater

**ST. GABRIEL**  
episcopal church  
CHERRY HILLS VILLAGE

6190 EAST QUINCY AVENUE  
CHERRY HILLS VILLAGE, CO 80111

**Starting June 8:**  
Summer Service Times - 9am and 5pm

**June 8:**  
65th Anniversary  
9am service and 12pm picnic

**June 16th-20th:**  
Children's Art Camp  
[stgabriels.org/artscamp](http://stgabriels.org/artscamp)

## babysitter's list...



The Crier offers the following list as an informational service only. The Crier does NOT review babysitter qualifications. Residents must screen babysitters themselves. In an effort to protect the privacy of our babysitters, the Crier only prints names and phone numbers in the listing.

- \* Indicates pet and plant care
- Indicates the babysitter can drive
- \*\* Indicates housesitting
- + Indicates Red Cross babysitting certified
- ▲ Mentor in Education

Lucy Johnson*	720-882-8188
Morgan Jones+	303-910-9422
Eastyn Konclja+ * ** •	720-656-3802
Gracie Kozlowski*	720-412-2105
Lila Kozlowski*	720-412-2105
Makena Lowery* ** •	303-748-2886
Isabella Lubeck+ *	303-907-4060
Emily Markenson+ *	303-917-6138
Rachel Markenson+ *	303-917-3727
Emily Matthews*	303-781-6777
Will Matthews*	303-781-6777
Aydan Metsch+ *	720-483-0527
Samantha Morrow* ** •	720-646-1684
Katie Mullen	303-803-8150
Claire Murphy*	307-351-9172
Emma Murphy* **	307-359-5380
Molly Murphy* **	307-359-2404
Eleanor Nielsen* ** •	720-884-7727
Lexi Pavlakis	303-761-6183
Elizabeth Schwartz	303-886-7431
Sander Sveen*	303-761-7757
Caitlin Vickers+	303-756-3266
Margaret Vogelpohl+ *	303-320-0546
Sloane Wehrman+ * **	303-870-6269
Davis Woodruff * **	720-448-9330
Emory Woodruff+ * ** • ▲	303-717-1904
Kingsley Woodruff	720-326-7429
(pet allergies)	
Gabriella Zane*	781-513-6451
Caden Zimmerman	303-733-9199
Alice Rose Conway * **	720-281-1995
Elin Olmstead * ** ▲	720-786-4276
Sophia Antonopoulos*	720-296-8091
Ellie Bauer	303-808-5185
Anna Baumbusch+	303-501-7287
Lucia Bell+ *	720-975-6207
Bridget Brown+	303-765-4470
Chelsea Davidson	303-520-9727
Anjali Devagupta* ** •	303-639-6110
Jessica Diamond	303-692-9475
Isabella Diamond	303-692-9475
Kristin Douglass	303-762-0080
Kate Duymelinck+ *	720-539-9529
Lizzie Elliott+ * **	720-550-3777
Liana Fagelson+ * •	303-829-0662
Sibel Fite*	720-568-0880
Jayne Fraser+ * •	720-556-2240
Lauren Garofalo+ * ** •	303-885-7174
Wesley Gonzales+ *	970-397-9428
Abby Goodrum+ *	303-475-0979
Caroline Hashimoto+ *	303-321-6155
Nicole Honnen*	303-819-4841
Taylor Hopkins*	720-300-4625
Lauren Huttner+ *	303-759-2054
Emmy Johnson*	720-800-2481

Send new or updated information to Laura  
Gillespie at [lgillespie@cherryhillsvillage.com](mailto:lgillespie@cherryhillsvillage.com)