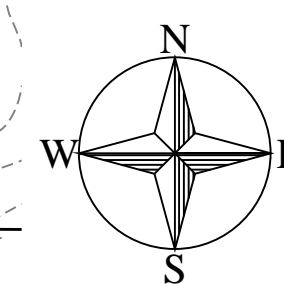




PLANTING NOTES

1. ALL LANDSCAPE AREAS SHALL RECEIVE TOPSOIL AND SOIL PREPARATION AS SPECIFIED.
2. ALL EXISTING GRASS STAND AREAS DISTURBED BY CONSTRUCTION OPERATIONS SHALL BE SOIL PREPARED AND SEEDED BY THE CONTRACTOR.
3. UNLESS NOTED OTHERWISE, ALL TURF PLANTING SHALL BE NATIVE SEED MIX.
4. CONTRACTOR SHALL COORDINATE IRRIGATION AND PLANTING WORK SUCH THAT INSTALLED IRRIGATION EQUIPMENT SHALL NOT CAUSE ADJUSTMENT OF PLANTING LOCATIONS CONTRARY TO THE PLANS. IF IRRIGATION EQUIPMENT IS INSTALLED IN LOCATIONS OBSTRUCTING THE INTENDED LOCATIONS OF THE PLANTINGS, THE IRRIGATION EQUIPMENT SHALL BE RELOCATED.
5. ALL PLANT MATERIAL SHALL BE STAKED OR PLACED BY THE CONTRACTOR AND OBSERVED BY THE LANDSCAPE ARCHITECT PRIOR TO PLANTING OPERATIONS.
6. CONTRACTOR SHALL HAND DIG ALL PLANTING PITS ADJACENT TO UTILITIES. IF UTILITIES ARE DAMAGED REPAIRS SHALL BE MADE AT NO ADDITIONAL COST TO OWNER.
7. ALL LANDSCAPING SHALL BE INSTALLED ACCORDING TO SOUND HORTICULTURAL PRACTICES IN A MANNER DESIGNED TO ENCOURAGE QUICK ESTABLISHMENT AND HEALTHY GROWTH.
8. ALL TREES SHALL BE LOCATED A MINIMUM OF 10' OFF OF THE FLOWLINES OF THE CURB ON ALL PUBLIC STREETS.
9. ALL TREES SHALL BE LOCATED A MINIMUM OF 10' OFF OF WATERLINE.
10. ALL LANDSCAPE AREAS SHALL BE IRRIGATED WITH UNDERGROUND AUTOMATIC IRRIGATION SYSTEM. TREES AND SHRUBS WILL BE IRRIGATED BY A SEPARATE ZONE.
6. NO PLANT SHALL BE PUT INTO THE GROUND BEFORE ROUGH GRADING HAS BEEN COMPLETED AND APPROVED BY THE LANDSCAPE ARCHITECT.
7. ALL PLANTS SHALL BEAR THE RELATIONSHIP TO FINISH GRADE AS THE PLANT'S ORIGINAL GRADE BEFORE DIGGING AS SPECIFIED OR DETAILED.
8. ALL TREES SHALL BE REVIEWED AND APPROVED AT NURSERIES BY THE LANDSCAPE ARCHITECT. CONTRACTOR SHALL PROVIDE A MAXIMUM OF TWO NURSERIES WHERE SELECTION OF PLANT MATERIAL IS AVAILABLE TO CHOOSE FROM. CONTRACTOR SHALL VISUALLY INSPECT AND TAG THE BEST SPECIMENS OF PLANT MATERIAL PRIOR TO LANDSCAPE ARCHITECT REVIEW AND APPROVAL.
9. THE DAY PRIOR TO PLANTING, THE LOCATION OF ALL TREES SHALL BE STAKED BY THE CONTRACTOR FOR APPROVAL BY THE LANDSCAPE ARCHITECT. NOTIFY LANDSCAPE ARCHITECT ONE WEEK PRIOR TO DATE OF SITE VISIT.
10. ALL PLANTS SHALL BE INSTALLED AS PER DETAILS AND SPECIFICATIONS. NEWLY PLANTED PLANTS SHALL BE HAND WATERED FOR ESTABLISHMENT IF IRRIGATION IS NOT IN PLACE AND FUNCTIONING. PROPER WATERING OF PLANTS DURING THE WARRANTY PERIOD SHALL BE THE RESPONSIBILITY OF THE CONTRACTOR, INCLUDING WINTER WATERING, IF NEEDED.
11. ALL PLANTS SHALL BE WATERED THOROUGHLY TWICE DURING THE FIRST 24-HOUR PERIOD AFTER PLANTING. ALL PLANTS SHALL THEN BE WATERED WEEKLY OR MORE OFTEN, IF NECESSARY, DURING THE FIRST GROWING SEASON.
12. LANDSCAPE CONTRACTOR SHALL REFER TO THE SPECIFICATIONS FOR ADDITIONAL REQUIREMENTS.
13. LANDSCAPE CONTRACTOR SHALL REFER TO THE PLANT SCHEDULE AND SPECIFICATIONS FOR SEASONAL REQUIREMENTS AND OTHER RESTRICTIONS RELATED TO THE TIME OF PLANTING.
14. ANY PLANT SPECIES SUBSTITUTIONS MUST BE APPROVED BY THE LANDSCAPE ARCHITECT PRIOR TO INSTALLATION.

WITH
FEM.



A horizontal number line is shown with tick marks at 0, 40, and 80. The segment of the line between 40 and 80 is shaded with vertical lines.



Know what's below
Call before you dig.

MUNDUS BISHOP |

1525 Raleigh Street, Suite 310
Denver, CO 80204
Tel: (303) 477-5244 Fax: (303) 477-5146

John Meade Park and Alan Hutto Memorial Commons

Department of Parks, Trails, and Recreation
City of Cherry Hills Village, Colorado

Issues	
75% CD	10/12/17
-	
-	
-	
-	

[illegible]

Design CLJMJTB
 Drawn AMMS
 Checked TB

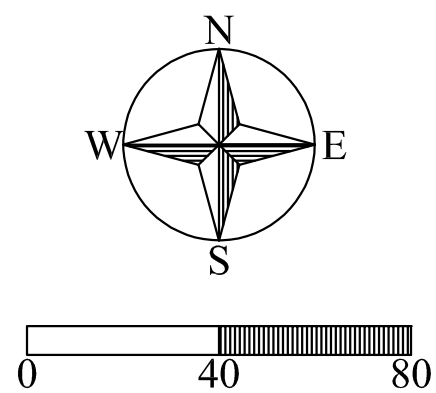
Sheet Title
Site Planting Plan

Sheet No.
L5.01



GENERAL NOTES	
A.	XX

KEYNOTE LEGEND	
KEY VALUE	
1.	IN GROUND LEGRAND POWER BOX, EXTERIOR GROUND BOX XBØ14 & EXTERIOR GROUND BOX COVER ASSEMBLY XBØ14C52ØBK, EACH BOX PREWIRED WITH (2) 2ØA WEATHER PROOF DUPLEX REG. CIRCUIT TOGETHER ON A SINGLE CKT.
2.	LOCATION OF 2ØØ/12ØV, PAD MOUNTED TRANSFORMER. ALL PRIMARY TRENCHING/BACKFILLING AND CONDUIT BETWEEN THE UTILITY PRIMARY CONNECTION AND THE TRANSFORMER SHALL BE FURNISHED/INSTALLED BY XCEL ENERGY. XCEL ENERGY SHALL PROVIDE ALL PRIMARY RUNS TO THE TRANSFORMER, INCLUDING TRENCHING BETWEEN THE NEAREST UTILITY CONNECTION AND THE PRIMARY CONNECTION POINT AT THE TRANSFORMER. THE EC SHALL COORDINATE ROUTING AND TERMINATION IN THE FIELD AS TO ACHIEVE BUILDING POWER ACTIVATION. THE EC SHALL PERFORM ALL TRENCHING AND BACKFILLING ON THE SECONDARY SIDE OF THE TRANSFORMER. XCEL ENERGY SHALL MAKE ALL CONNECTIONS OF THE PRIMARY AND SECONDARY CABLES AT THE TRANSFORMER LANDINGS. THE EC SHALL FURNISH AND INSTALL THE REQUIRED METER HOUSING AS COORDINATED WITH XCEL ENERGY. XCEL ENERGY SHALL FURNISH, INSTALL, AND CONNECT THE METER IN HOUSING. ALL COSTS FOR WORK DESCRIBED ABOVE TO BE PERFORMER BY XCEL ENERGY SHALL BE CARRIED AS PART OF THE PROJECT BUDGET AND SHALL BE PAID BY THE CONTRACTOR. TRANSFORMER CONCRETE PAD BY CUSTOMER. COORDINATE PAD AND CLEARANCE REQUIREMENTS WITH XCEL ENERGY.



NOT FOR CONSTRUCTION

John Meade Park and Alan Hutto Memorial Commons
Department of Parks, Trails, and Recreation
City of Cherry Hills Village, Colorado

Issues

Revisions
Design AS
Drawn
Checked VP

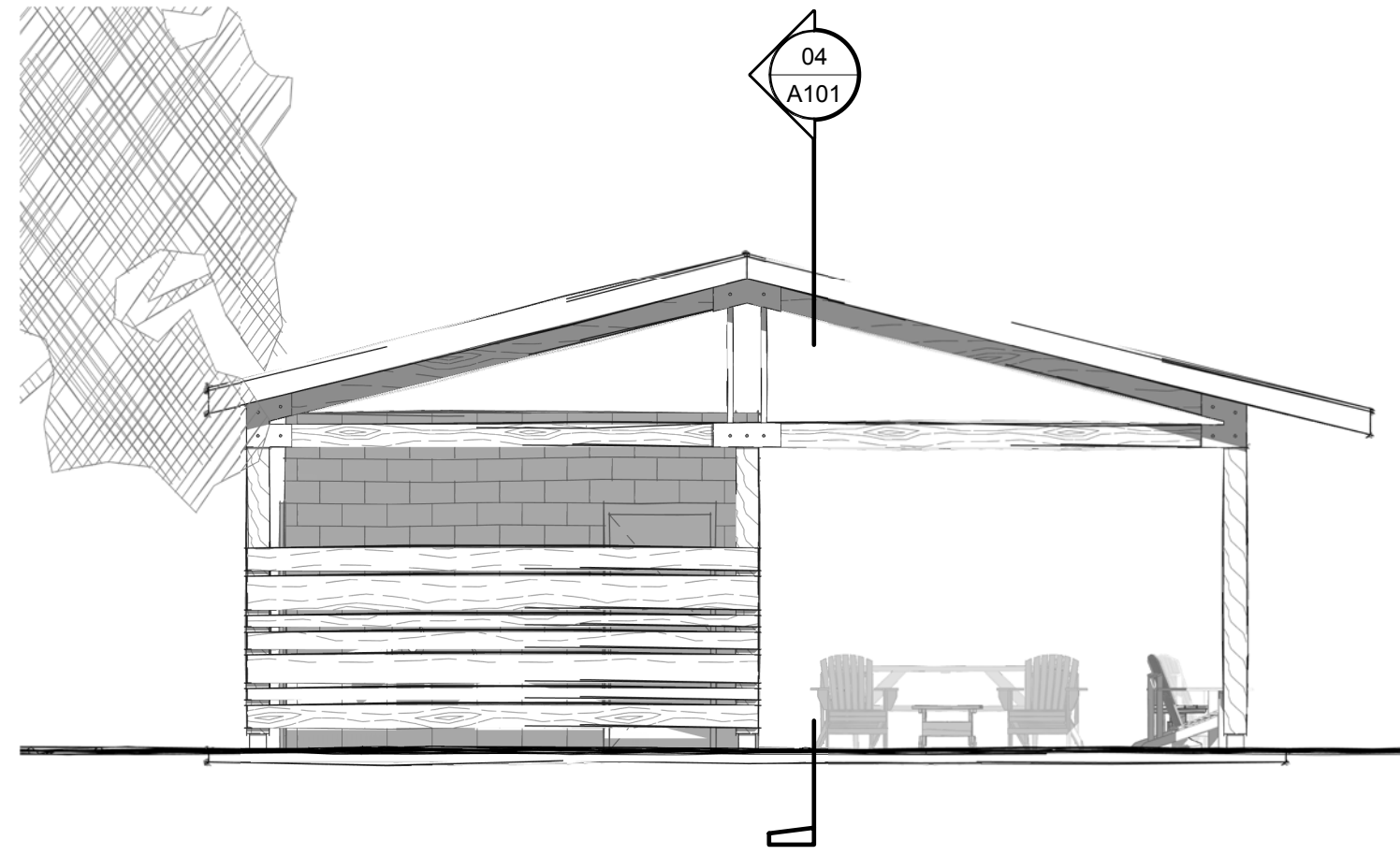
Sheet Title ELECTRICAL POWER PLAN
Sheet No. E2.0

MUNDUS BISHOP

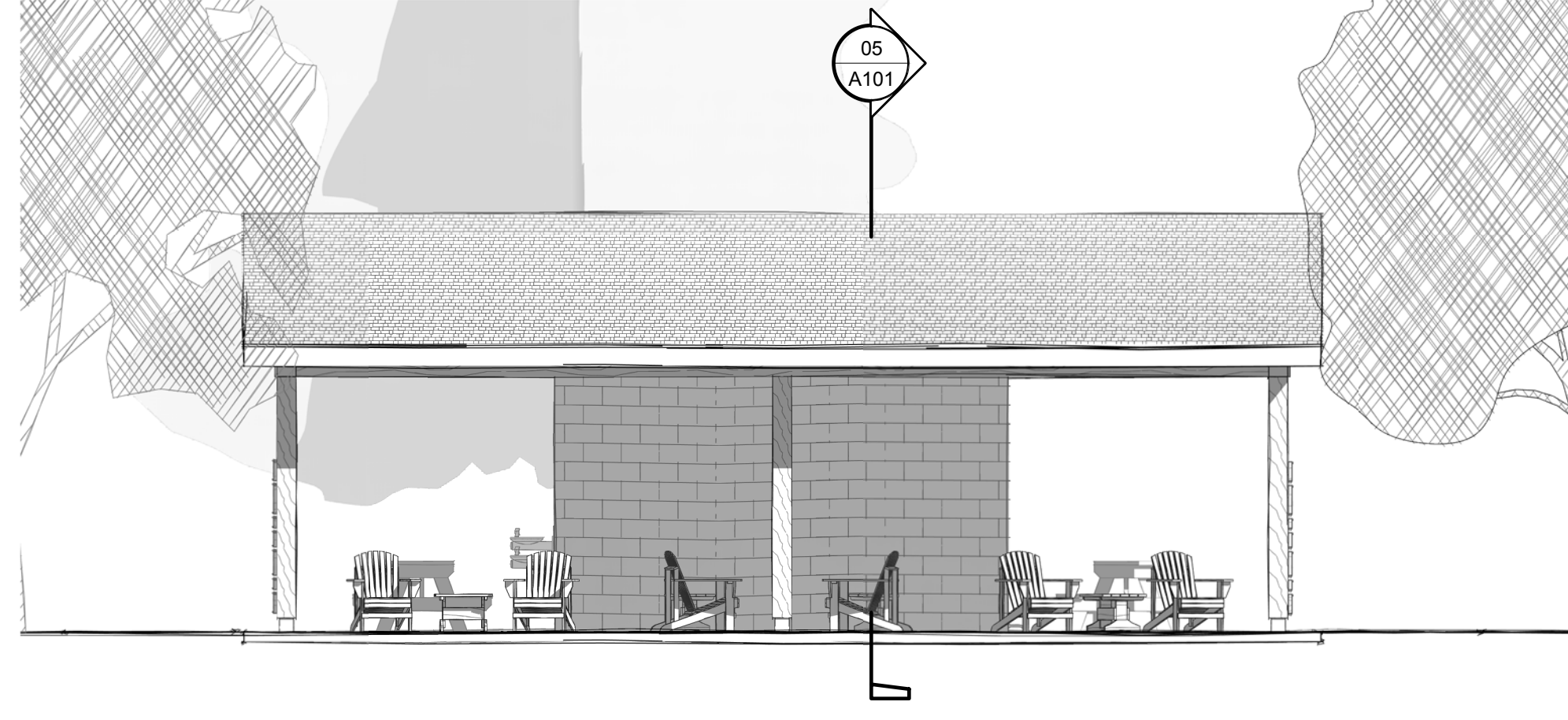
1525 Raleigh Street, Suite 310
Denver, CO 80204
Tel: (303) 477-5244 Fax: (303) 477-5146

AEDESIGN

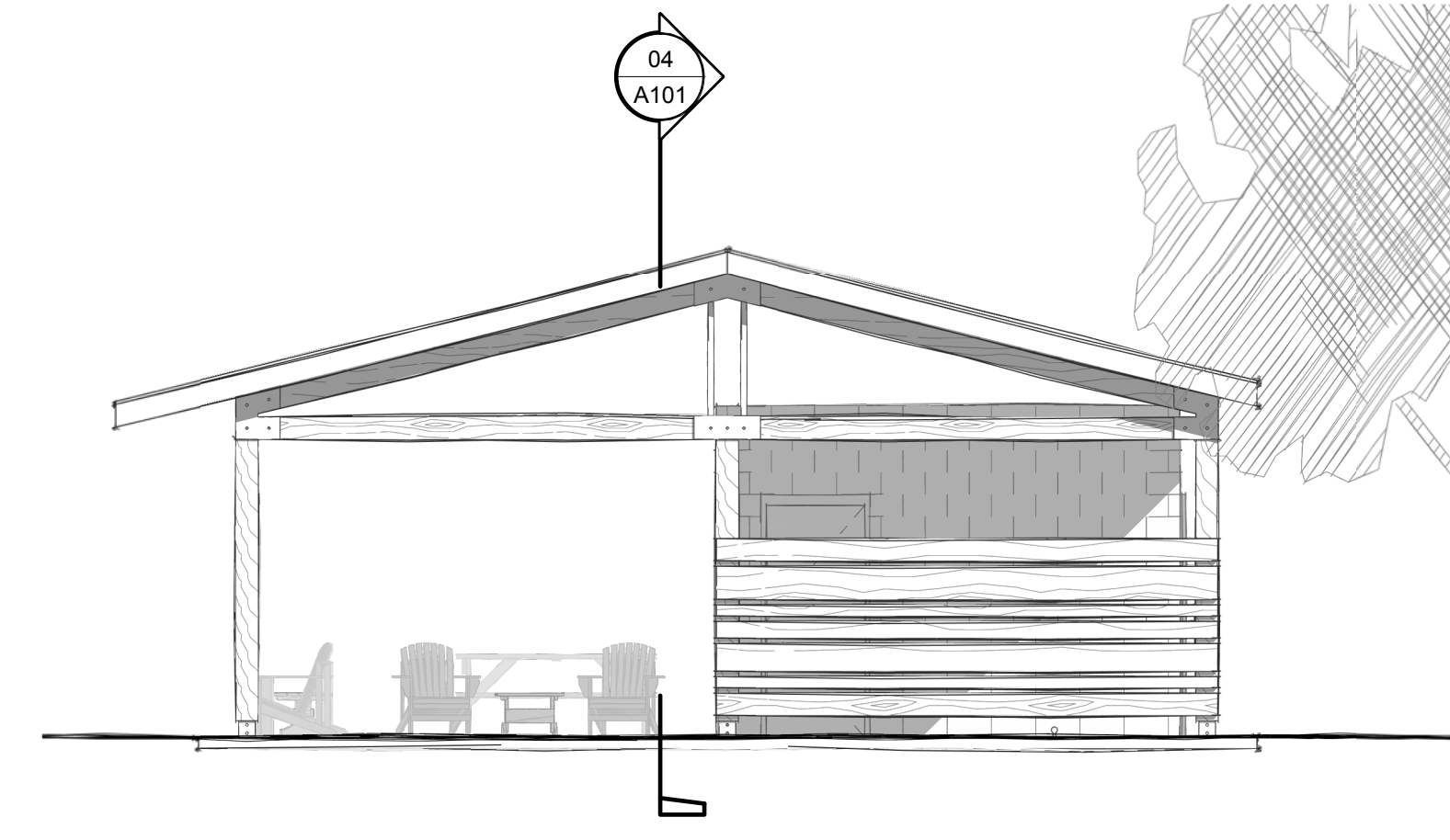
Integrated Lighting and Electrical Solutions
1900 Wazee Street #205 | Denver, CO 80202 | 303.296.3034
ae@ae-design.com Project #1992.00



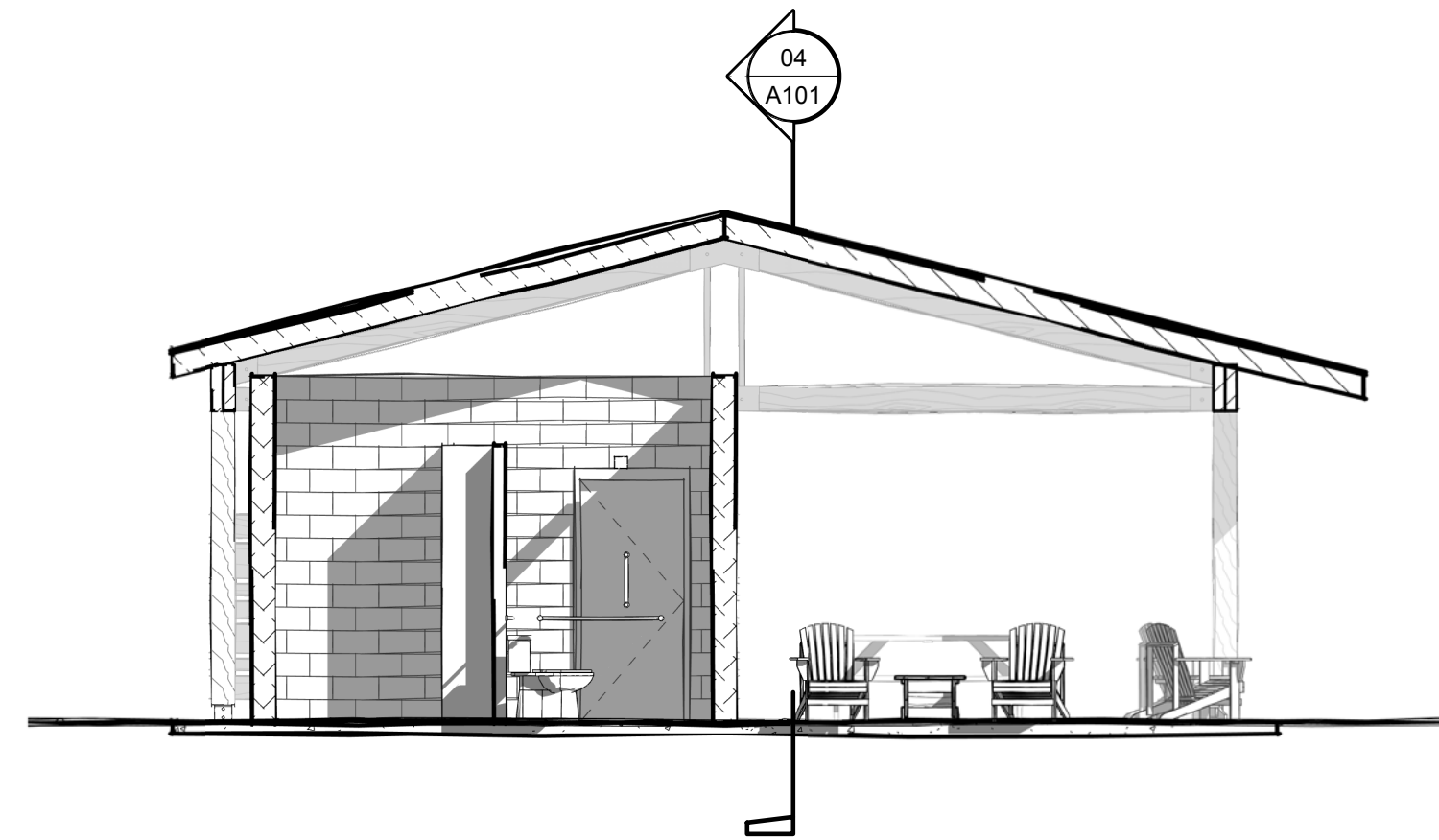
8 WEST ELEVATION
3/16" = 1'-0"



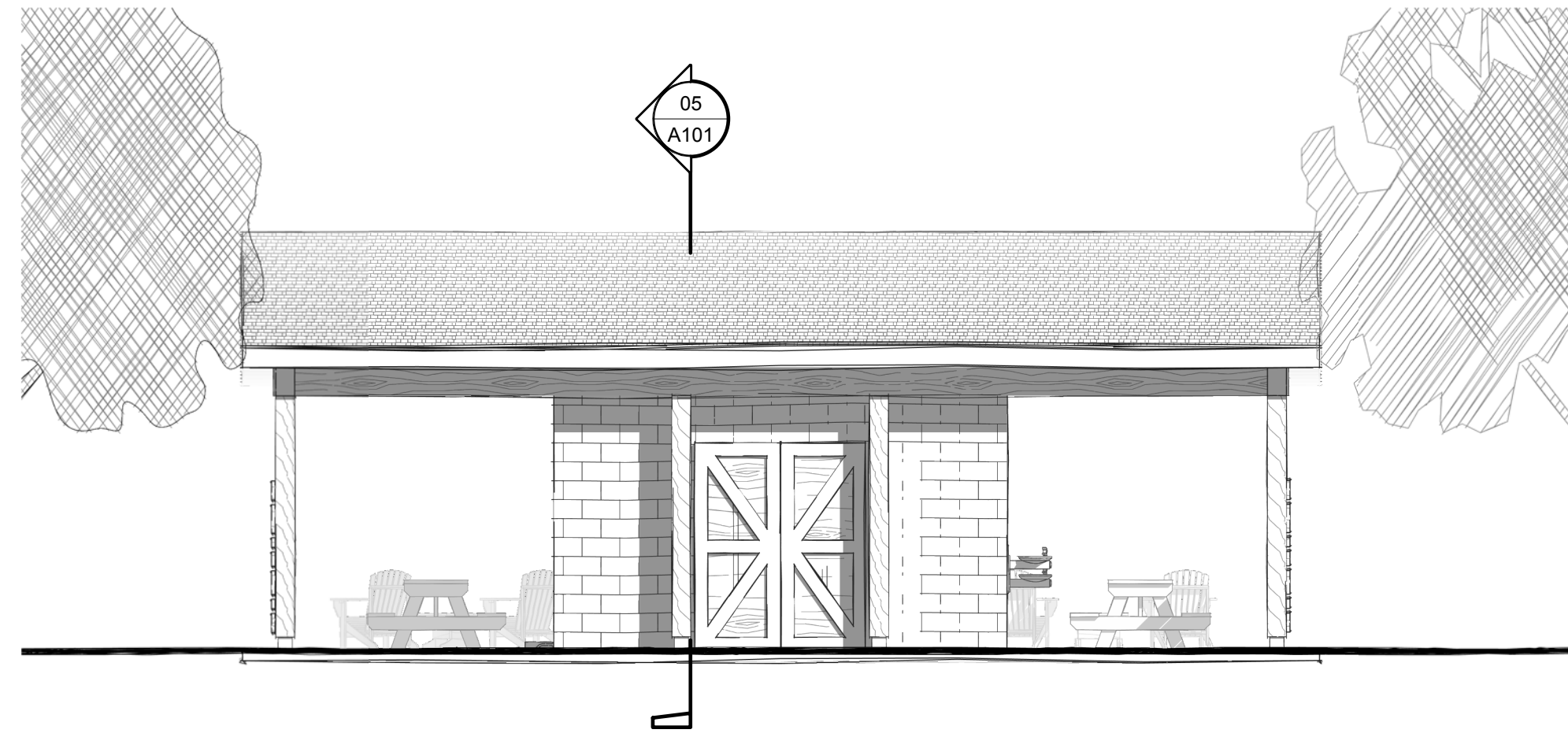
7 SOUTH ELEVATION
3/16" = 1'-0"



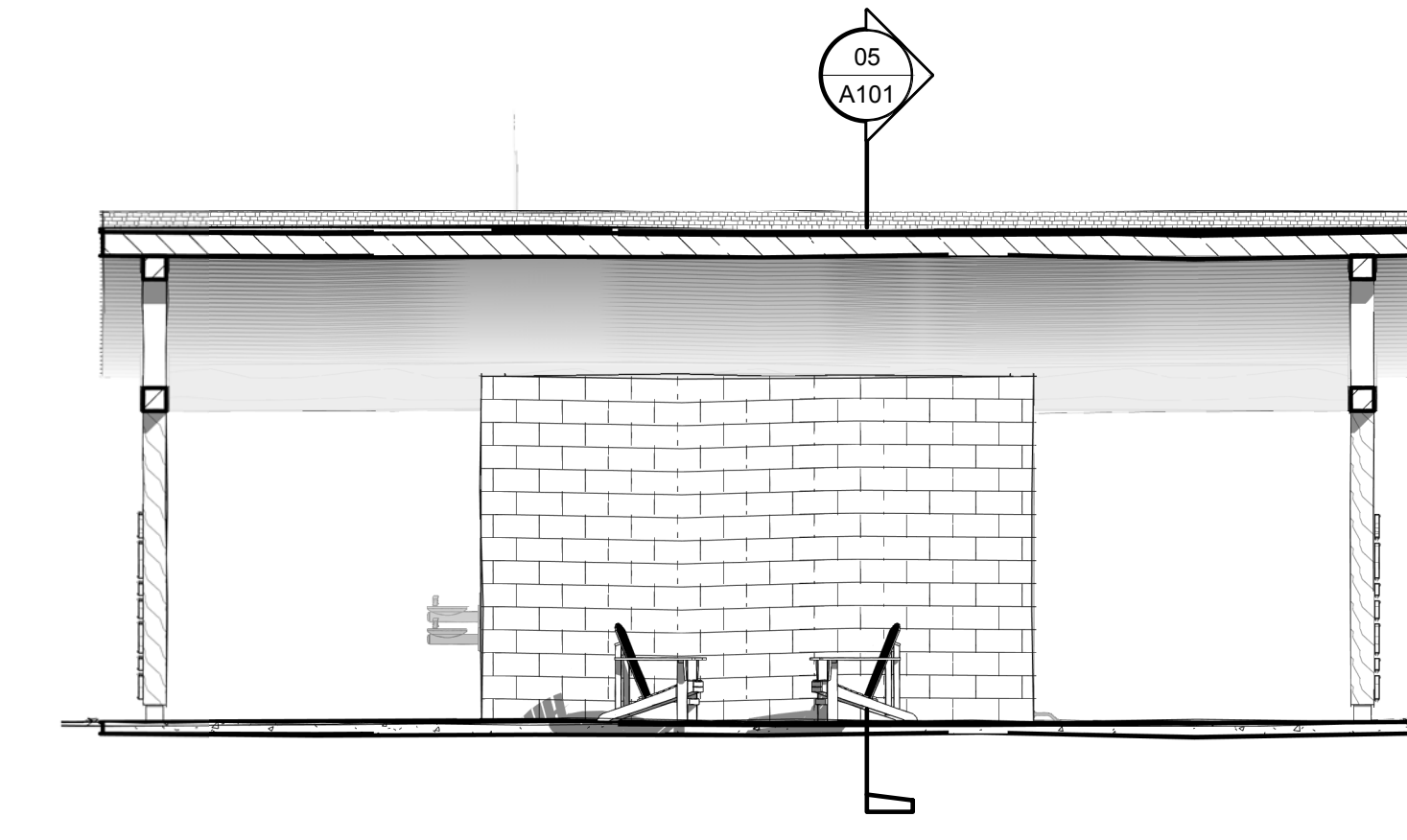
6 EAST ELEVATION
3/16" = 1'-0"



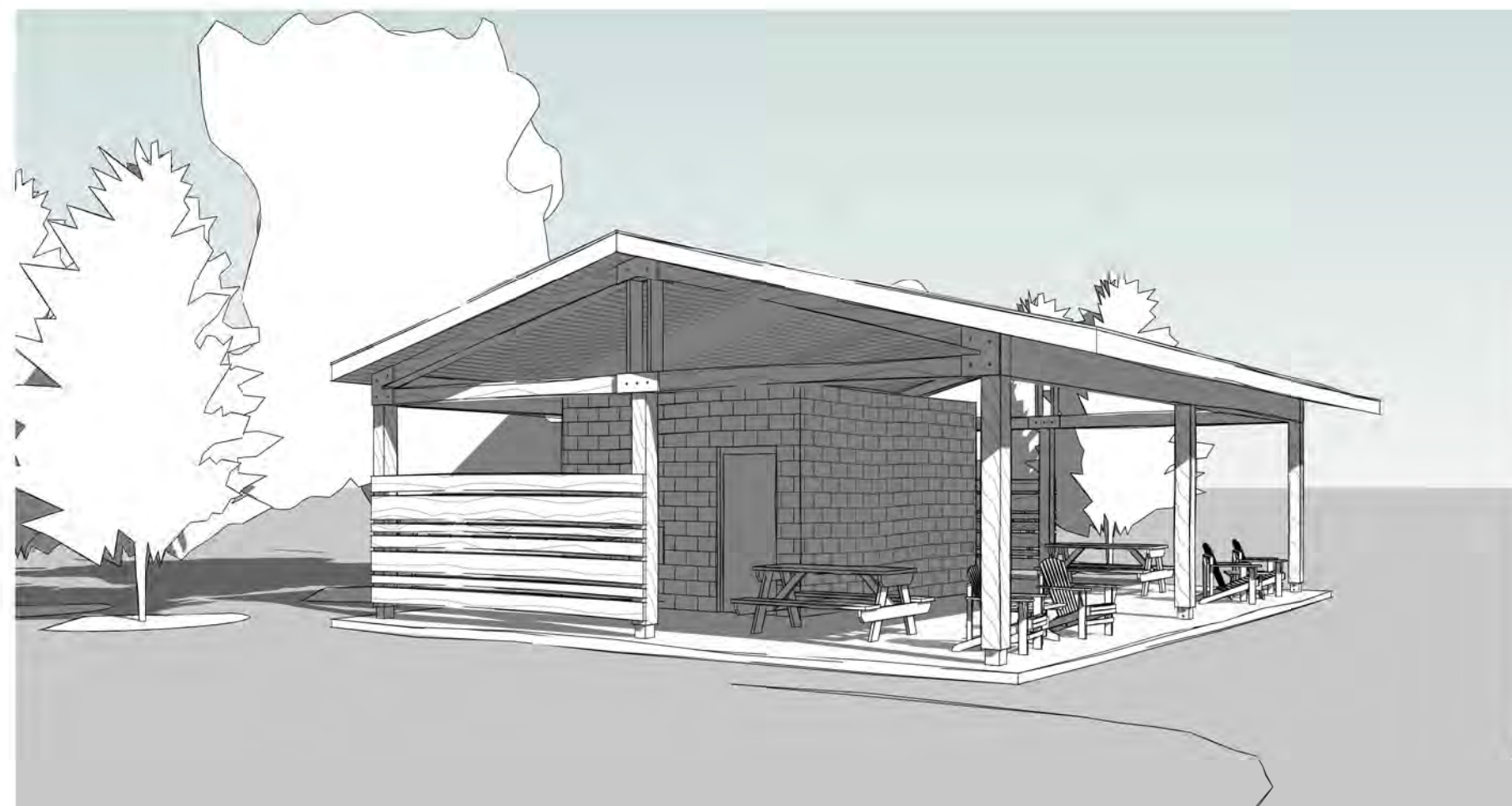
05 SECTION LOOKING EAST
3/16" = 1'-0"



9 NORTH ELEVATION
3/16" = 1'-0"



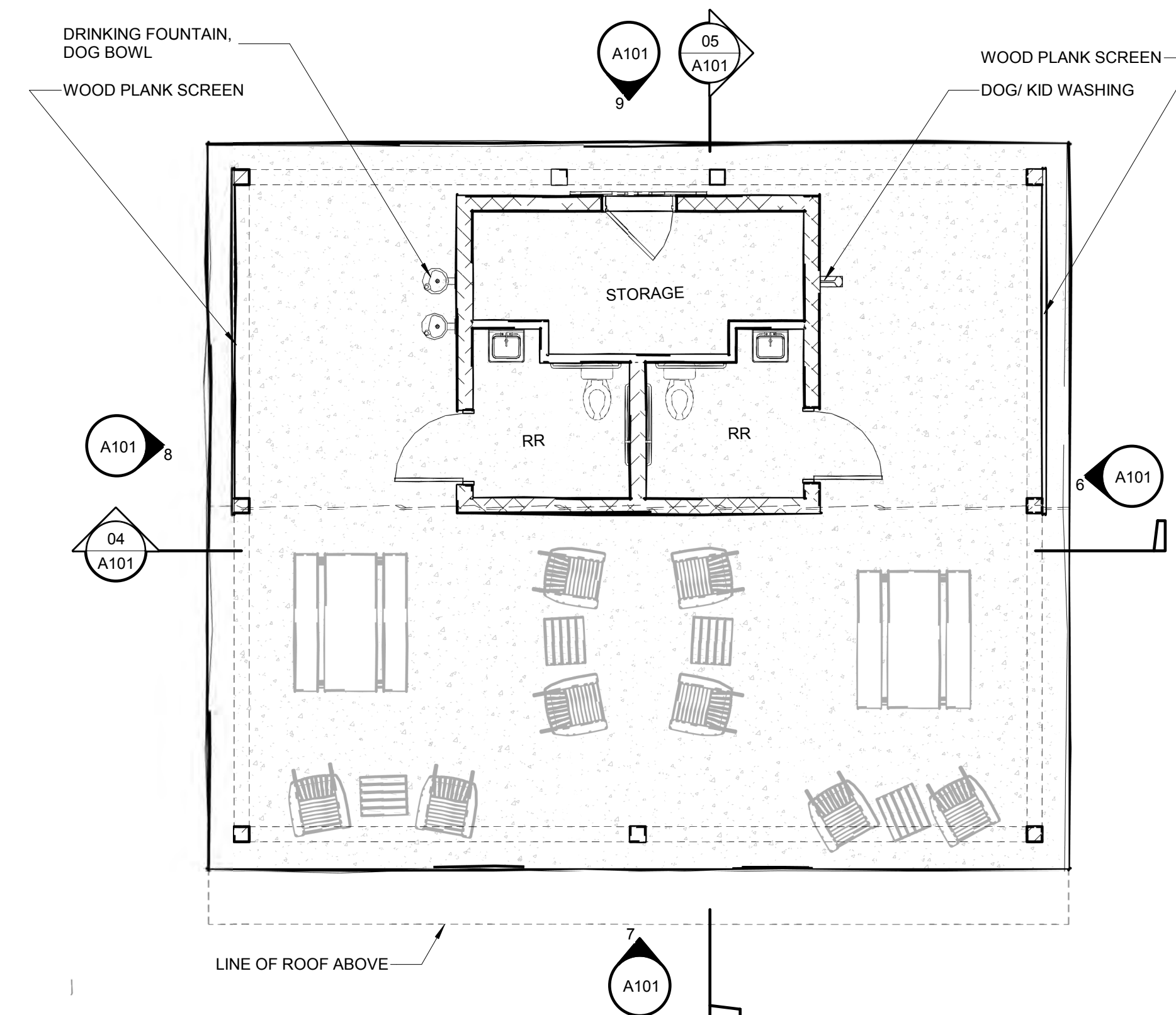
04 SECTION LOOKING NORTH
3/16" = 1'-0"



03 PERSPECTIVE LOOKING EAST
A101



2 PERSPECTIVE LOOKING WEST
A101



1 SHELTER FLOOR PLAN
3/16" = 1'-0"

chairs & benches

- 1. Baldwin Adirondack Chair, wood, \$240, residential grade
- 2. Trex Cape Cod Adirondack Chair, HDPE, \$220-\$450, residential grade
- 3. Thomas Steele Monona Chair, wood/steel, \$920-\$960, commercial grade
- 4. Thomas Steele Monona Bench, wood/steel, \$1080-\$1130, commercial grade
- 5. Lyons Sandstone, Natural Bench, sandstone, various price



bike racks

- 1. Victor Stanley, BRWS-101, tubular steel, \$196, commercial grade



hammocks

- 1. Dynamo, The Hammock, steel/rope
- 2. Berliner, Terrano.196, steel/rope



picnic tables

- 1. Thomas Steele Walden Park Picnic 6 ft, wood/steel, \$530-\$2160, commercial grade (available with accessible seating)
- 2. Thomas Steele Walden Picnic 8 ft, wood/steel, \$550-\$2430, commercial grade
- 3. Park Master PMB-8PCE, steel/recycled plastic, \$900-\$1040, removable, commercial grade
- 4. Victor Stanley ST-6, steel/wood or recycled plastic, \$1496-\$2198, in-ground mount



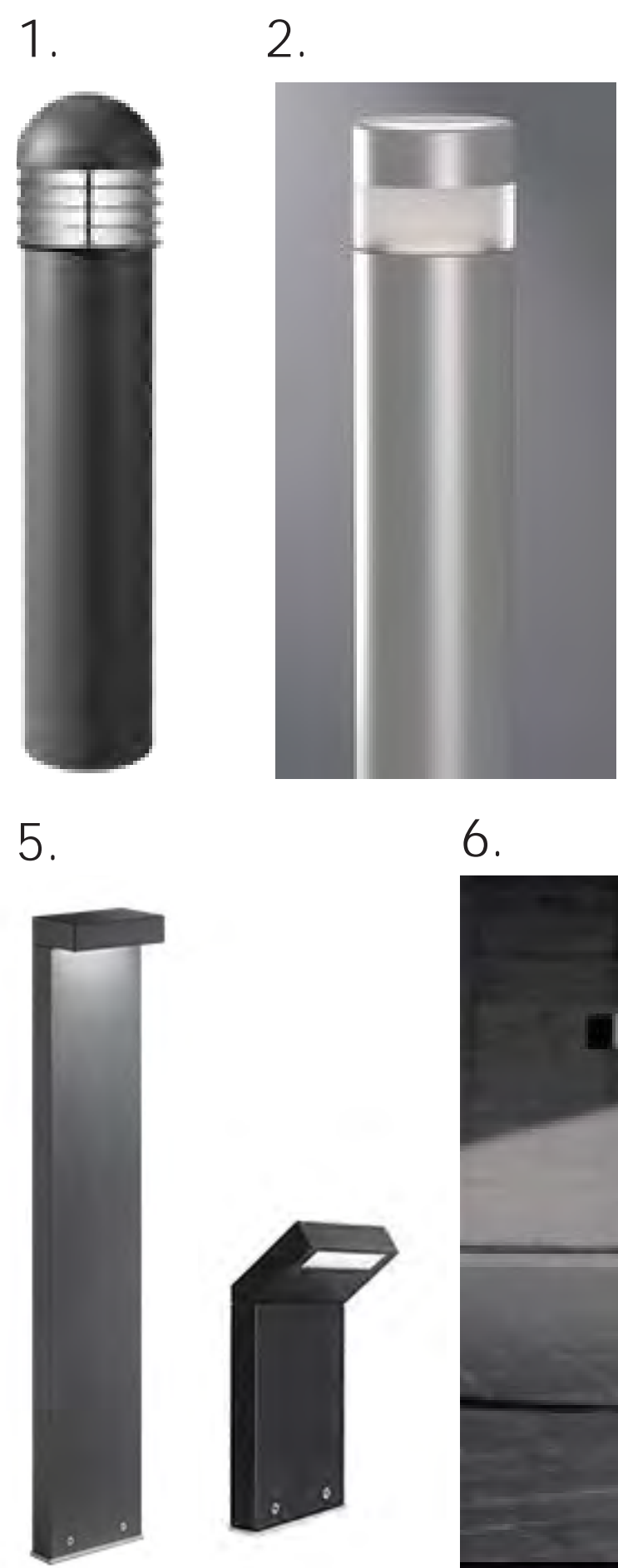
waste receptacles

- 1. Victor Stanley, A-36, steel, \$1196, commercial grade
- 2. Victor Stanley, SAGE, steel, \$1312, commercial grade



bollards/lighting

- 1. 3100C LED (matches existing police station)
- 2. Eaton Aspen
- 3. Designplan Zefiro
- 4. Designplan Sandro
- 5. Designplan Plin 1 and 2
- 6. Meteor SP-7 (solar)



AHC power

- 1. Arlington GPD19B
- 2. Legrand Outdoor Ground Box



8/03/17 9:32 kotab R25 S: Projects\John Meade Park - 1612\Drawings\05 CDs\ WB-JMP-Planting.dwg



LEGEND

- OBLIGATE WETLAND SPECIES
- FACULTATIVE WETLAND SPECIES
- FACULTATIVE UPLAND SPECIES
- UPLAND SPECIES

NOT FOR CONSTRUCTION

John Meade Park and Alan Hutto Memorial Commons
Department of Parks, Trails, and Recreation
City of Cherry Hills Village, Colorado

Issues

Revisions
Design CLUMITB
Drawn AMMS
Checked TB

Sheet Title
Planting Plan
Enlargement - West

Sheet No.
L5.02



8/07/17 15:00 KateB R25 S:\Projects\John Meade Park - 1612\Drawings\05 CDs\ MB - JMF - Planting.dwg

UPLAND PLANT SCHEDULE							
ABBR	BOTANIC NAME	COMMON NAME	HT	SPREAD	WATER USE	COLOR	WILDLIFE BENEFITS
EVERGREEN TREES							
Evergreen trees shall be balled and burlapped or spade dug with single leaders and full branching patterns to the ground.							
PME	<i>Pseudotsuga menziesii</i>	Douglas Fir	40-80'	12-20'	Medium	Dark green needles with brown cones	Shelter and food for birds, mammals, insects
PST	<i>Pinus strobiformis</i>	Southwestern White Pine	50-80'	40-60'	Medium	Blue-green needles with yellow-brown cones	Shelter and food for birds
PNI	<i>Pinus nigra</i>	Austrian Pine	50-60'	20-40'	Medium	Green needles with yellow-orange cones	Habitat and food

DECIDUOUS TREES							
Deciduous trees shall be balled and burlapped with full heads, straight trunks, and single leaders unless otherwise noted. All shade trees (2-1/2" cal.) shall have their first branch 5'-7" above the top of the rootball.							
CBE	<i>Carpinus betulus fastigiata</i>	Pyramidal European Hornbeam	25-35'	15-25'	Medium	Oblong-oval deeply ridged dark green leaves	Habitat
GTR	<i>Gleditsia triacanthos inermis 'Skyline'</i>	Skyline Honeylocust	35-45'	25-35'	Medium	Light green foliage, yellow in fall, green/white flowers	Shelter
MPR	<i>Malus 'Prairie Rose'</i>	Prairie Rose Crabapple	15-20'	15-20'	Medium	Medium green, lobed leaves, white/pink flowers	Habitat
PAN	<i>Populus angustifolia</i>	Narrowleaf Cottonwood	45-60'	45-60'	High	Green foliage, white flowers and cottony seeds	Habitat, shelter, food
PCM	<i>Prunus cerasus 'Montmorency'</i>	Montmorency Cherry	10-20'	10-20'	Medium	Green foliage, fragrant white flowers	Food for birds, wildlife
QMA	<i>Quercus macrocarpa</i>	Bur Oak	60-80'	60-80'	Low to Med	Dark green waxy foliage, acorns	Attracts birds, mammals, rodents
QMU	<i>Quercus muehlenbergii</i>	Chinkapin Oak	40-60'	50-70'	Low to Med	Green waxy foliage, acorns	Attracts songbirds
QSH	<i>Quercus shumardii</i>	Shumard Oak	40-60'	30-40'	Low to Med	Green foliage, red in fall, acorns	Attracts birds, mammals, rodents
UMA	<i>Ulmus morton 'Accolade'</i>	Accolade Elm	50-60'	25-40'	Medium	Dark green glossy foliage, yellow in fall	Shelter for migrating birds

DECIDUOUS AND EVERGREEN SHRUBS							
All shrubs shall be containerized stock (#5 container, unless otherwise noted).							
PVM	<i>Prunus virginiana melanocarpa</i>	Native Chokecherry	6-10'	6'	L	Green foliage, white flowers, red to black fruit	Food and shelter for numerous species
RAU	<i>Ribes aureum</i>	Golden Currant	2-5'	2-5'	L	Green foliage, yellow flowers, yellow to red fruit	Food for large game, birds, small mammals
SOR	<i>Symphoricarpos oreophilus</i>	Mountain Snowberry	4'	2-4'	M	Green foliage, white/pink flowers, green/white fruit	Food for large and small game, birds
SOC	<i>Symphoricarpos occidentalis</i>	Wolfberry	1-4'	1-4'	L	Green foliage, white/pink flowers, purple fruit	Habitat, shelter for birds, small mammals

WETLAND PLANT SCHEDULE							
DECIDUOUS TREES							
Deciduous trees shall be balled and burlapped with full heads, straight trunks, and single leaders unless otherwise noted. All shade trees (2-1/2" cal.) shall have their first branch 5'-7" above the top of the rootball.							
PAN	<i>Populus angustifolia</i>	Narrowleaf Cottonwood	45-60'	45-60'	FACW	Green foliage, white flowers and cottony seeds	Habitat, shelter, food
SAM	<i>Salix amygdaloides</i>	Peachleaf Willow	35-50'	35-50'	FACW	Bright green foliage, white catkins	Habitat, shelter, food, attracts pollinators and insects

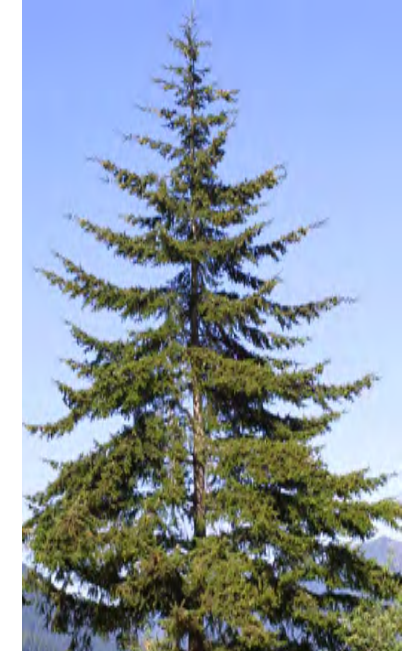
DECIDUOUS AND EVERGREEN SHRUBS							
All shrubs shall be containerized stock (#5 container, unless otherwise noted).							
CSE	<i>Cornus sericea</i>	Red-Osier Dogwood	10'	10'	FACW	Green foliage, white flowers, red stems	Habitat, shelter
PVM	<i>Prunus virginiana melanocarpa</i>	Native Chokecherry	6-10'	6'	FACU	Green foliage, white flowers, red to black fruit	Food and shelter for numerous species
RAU	<i>Ribes aureum</i>	Golden Currant	2-5'	2-5'	FACW	Green foliage, yellow flowers, yellow to red fruit	Food for large game, birds, small mammals
SEX	<i>Salix exigua</i>	Sandbar Willow	4-15'	4-15'	FACW/OBL	Silver-green foliage, white-yellow flowers	Food for native bees, moths
SOR	<i>Symphoricarpos oreophilus</i>	Mountain Snowberry	4'	2-4'	OBL	Green foliage, white/pink flowers, green/white fruit	Food for large and small game, birds
SOC	<i>Symphoricarpos occidentalis</i>	Wolfberry	1-4'	1-4'	OBL	Green foliage, white/pink flowers, purple fruit	Habitat, shelter for birds, small mammals

PERENNIALS							
All perennials shall be containerized stock (#1 container, unless otherwise noted).							
AIN	<i>Asclepias incarnata</i>	Marsh Milkweed	4-5'	2-3'	FACW/OBL	Green foliage, white and pink flowers	Attracts pollinators
HNU	<i>Helianthus nuttallii</i>	Nuttall's Sunflower	3-10'	3-10'	FACW	Silver-green foliage, yellow flowers	Attracts pollinators
IMI	<i>Ins missouriensis</i>	Rocky Mountain Iris	1-2'	0.5-1'	FACW/OBL	Green foliage, purple flower	Attracts hummingbirds
SLA	<i>Sagittaria latifolia</i>	Broadleaf Arrowhead	1'	1-3'	OBL	Green arrow-shaped leaves, white flowers	Food and shelter for waterfowl

GRASSES							
All grasses shall be containerized stock (#1 container, unless otherwise noted).							
CUT	<i>Carex utriculata</i>	Northwest Territory Sedge	2-4'	sod-forming	OBL	Slender green grass with monoecious flowers	Food for large mammals and birds
DCE	<i>Deschampsia cespitosa</i>	Tufted Hairgrass	2-3'	1-2'	FACW	Dark green grass with airy flowers	Food and shelter for birds, insects
EPA	<i>Eleocharis palustris</i>	Creeping Spike Rush	2-4'	1-2'	OBL	Slender green stems with brown-green spikelets	Food and shelter for birds, insects, amphibians
JSA	<i>Juncus saximontanus</i>	Rocky Mountain Rush	.5-1.5'	1-2'	FACW	Brown flowers on flat, sword-shaped leaves	Food and shelter for birds, rodents
PPA	<i>Poa palustris</i>	Fowl Bluegrass	1-1.5'	1-2'	FACU/FACW	Pink clusters of flowers	Edible seeds for variety of wildlife
SCA	<i>Schoenoplectus americanus</i>	Three Square Bulrush	3-7'	3-7'	OBL	Green spiky grass with brown fruits	Food and shelter for waterfowl, muskrat
SPA	<i>Scirpus pallidus</i>	Cloaked Bulrush	4-6'	1-3'	OBL	Green grass with clusters of green-brown flowers	Food and shelter for waterfowl, birds, amphibians
SPE	<i>Spartinia pectinata</i>	Prairie Cordgrass	4-7'	4-7'	FACW/OBL	Green-gold grass with comb-like cluster of flowers	Habitat and shelter for birds and small mammals
VHA	<i>Verbena hastata</i>	Blue Vervain	1.5-2.5'	1-2'	FACW	Pink clusters of flowers	Attracts pollinators

PLANT IMAGES

TREES



Pseudotsuga menziesii



Pinus strobiformis



Pinus nigra



Carpinus betulus fastigiata



Gleditsia triacanthos inermis 'Skyline'



Malus 'Prairie Rose'



Malus cerasus 'Montmorency'



Quercus macrocarpa



Quercus muehlenbergii



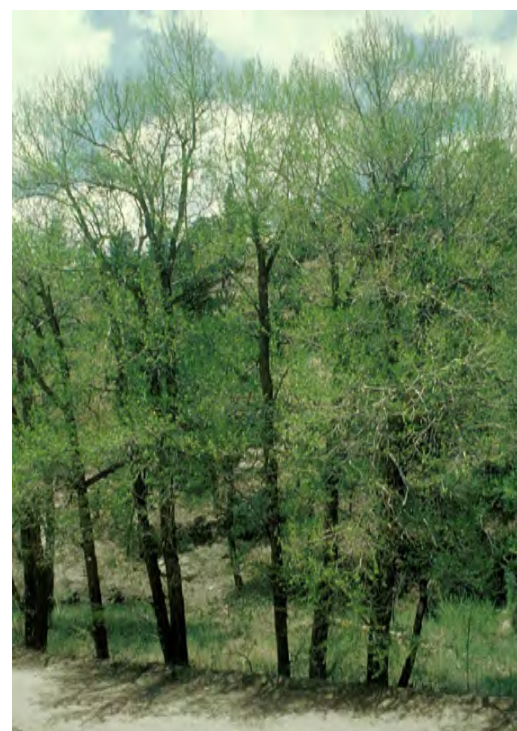
Quercus shumardii



Ulmus morton 'Accolade'



Salix amygdaloides



Populus angustifolia

SHRUBS



Prunus virginiana melanocarpa



Ribes aureum



Cornus sericea



Salix exigua



Symphoricarpos oreophilus



Symphoricarpos occidentalis

PERENNIALS



Asclepias incarnata



Helianthus nuttallii



Iris missouriensis



Sagittaria latifolia

GRASSES



Carex utriculata



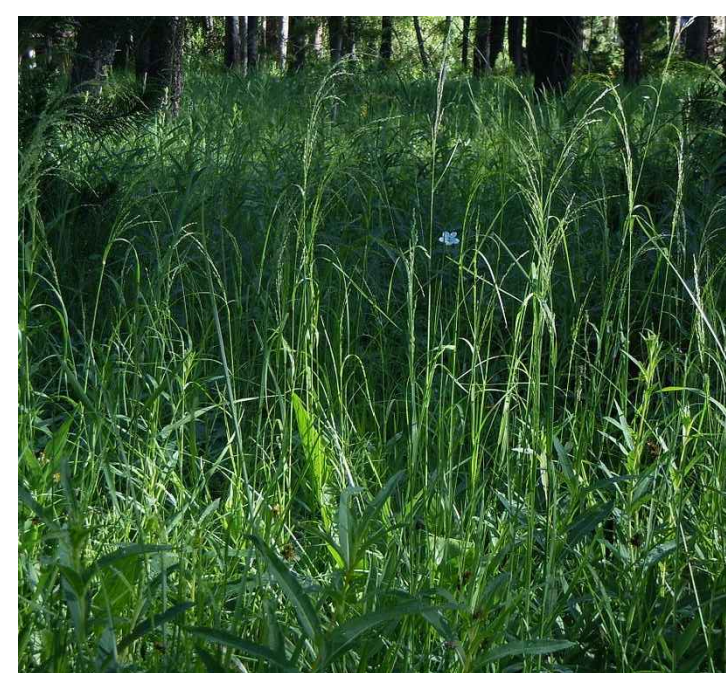
Deschampsia cespitosa



Eleocharis palustris



Juncus saximontanus



Poa palustris



Schoenoplectus americanus



Scirpus palladus



Spartinia pectinata



Verbena hastata



Know what's below
Call before you dig.

MUNDUS BISHOP

1525 Raleigh Street, Suite 310
Denver, CO 80204
Tel: (303) 477-5244 Fax: (303) 477-5146

John Meade Park and Alan Hutto Memorial Commons
Department of Parks, Trails, and Recreation
City of Cherry Hills Village, Colorado

NOT FOR CONSTRUCTION

Issues

Revisions

Design CLJ/MTB

Drawn AMIMS

Checked TB

Sheet Title
Planting Schedule
Planting Details

Sheet No.
L5.03

DRAFT

[illegible]

PTRC
Planning Commission
City Council

John Meade and Alan Hutto Memorial Commons

City of Cherry Hills Village
September 2017 - 50% Construction Documents
Opinion of Estimated Construction Cost

DRAFT

Project Size: 462,500 SF/ 10.62 AC

BID ITEM	DESCRIPTION	UNIT	QUANTITY	UNIT PRICE	TOTAL PRICE	SUBTOTAL
General Conditions						\$ 111,000.00
01 50 00	Temporary Construction Facilities	LS	1	\$ 21,000.00	\$ 21,000.00	
01 55 26	Traffic Control in the ROW	LS	1	\$ 15,000.00	\$ 15,000.00	
01 56 39	Tree Protection	LS	1	\$ 10,000.00	\$ 10,000.00	
01 57 13	Erosion Control	LS	1	\$ 15,000.00	\$ 15,000.00	
01 71 23	Construction Surveying	LS	1	\$ 15,000.00	\$ 15,000.00	
02 41 13	Selective Site Demolition	LS	1	\$ 35,000.00	\$ 35,000.00	
Floodway						\$ 368,308.00
31 11 00	Wetland dredging/mucking	CY	5,335	\$ 40.00	\$ 213,400.00	
31 14 00	Earth Stripping and Stockpiling	CY	1,770	\$ 12.00	\$ 21,240.00	
31 23 00	Earthwork - Cut	CY	1,216	\$ 18.00	\$ 21,888.00	
31 23 00	Earthwork - Import and Fill	CY	1,814	\$ 20.00	\$ 36,280.00	
33 40 00	Storm Drainage Utilities	LS	1	\$ 18,000.00	\$ 18,000.00	
31 62 16	Sheet Piling	SF	500	\$ 35.00	\$ 17,500.00	
32 72 00	Dewatering	LS	1	\$ 40,000.00	\$ 40,000.00	
Wetland Revegetation						\$ 96,275.00
32 72 00	Wetlands Restoration Seeding	AC	1.10	\$ 3,000.00	\$ 3,300.00	
32 72 00	Wetlands Restoration Planting - Containers	EA	4,850	\$ 7.50	\$ 36,375.00	
32 72 00	Wetlands Restoration Planting - Plugs	EA	22,300	\$ 2.00	\$ 44,600.00	
32 72 00	Wetlands Restoration Planting - Sod	EA	200	\$ 60.00	\$ 12,000.00	
Site Amenities						\$ 266,330.00
32 33 13	Site Furnishings, Amenities	LS	1	\$ 12,500.00	\$ 12,500.00	
35 51 00	Boardwalk and Benches	SF	2,975	\$ 75.00	\$ 223,125.00	
35 51 00	Fishing Piers	SF	150	\$ 85.00	\$ 12,750.00	
32 34 13	Pedestrian Bridge at Pond One	LF	40	\$ 175.00	\$ 7,000.00	
04 40 00	Boulder Weir	LF	45	\$ 175.00	\$ 7,875.00	
32 31 29	8' Wood Fence	LF	88	\$ 35.00	\$ 3,080.00	
Play Areas						\$ 130,860.00
11 86 16	Hammock	EA	2	\$ 10,000.00	\$ 20,000.00	
06 20 13	Tower	LS	1	\$ 20,000.00	\$ 20,000.00	
06 20 13	Bridge	LS	1	\$ 16,000.00	\$ 16,000.00	
32 18 16	Fiber Mulch Playground Surfacing	CF	1,870	\$ 3.00	\$ 5,610.00	
04 41 00	Natural Play Feature (stone, stumps, timber)	LS	1	\$ 10,000.00	\$ 10,000.00	
04 40 00	Stone Retaining Wall	LF	240	\$ 125.00	\$ 30,000.00	
32 13 13	Sculpted, seeded Concrete at "Beach"	SF	650	\$ 45.00	\$ 29,250.00	
Park Trails						\$ 294,815.50
32 15 40	Crushed Stone Paving	SF	25,155	\$ 6.00	\$ 150,930.00	
32 16 13	Concrete Curbs	LF	5,305	\$ 22.00	\$ 116,710.00	
32 13 13	Concrete Paving (5")	SF	4,941	\$ 5.50	\$ 27,175.50	
Alan Hutto Memorial Commons						\$ 67,025.00
31 23 00	Earthwork	CY	1,110	\$ 18.00	\$ 19,980.00	
32 15 40	Crushed Stone Paving	SF	670	\$ 6.00	\$ 4,020.00	
32 16 13	Concrete Curbs	LF	1,550	\$ 22.00	\$ 34,100.00	
03 00 00	Concrete Seat Walls	LF	75	\$ 75.00	\$ 5,625.00	
32 13 13	Concrete Paving (5")	SF	600	\$ 5.50	\$ 3,300.00	
Shelter / Restrooms						\$ 226,300.00
10 70 00	Pre-fabricated Restroom	LS	1	\$ 105,000.00	\$ 105,000.00	
10 70 00	Custom Shelter with Metal Roof	SF	1,100	\$ 85.00	\$ 93,500.00	
32 13 13	Concrete Paving (6")	SF	1,200	\$ 6.50	\$ 7,800.00	
22 00 00	Utilities to POC	LS	1	\$ 20,000.00	\$ 20,000.00	
Electrical / Lighting						\$ 13,500.00
26 56 00	Exterior Lighting	LS	1	\$ 8,500.00	\$ 8,500.00	
26 00 00	Electrical Systems	LS	1	\$ 5,000.00	\$ 5,000.00	
48 00 00	Solar Installation (Not Included in Total)	LS	1	\$ 45,000.00	\$ 45,000.00	
Landscape						\$ 622,573.25
32 80 00	Irrigation/Turf	SF	38,665	\$ 2.00	\$ 77,330.00	
32 80 00	Temporary Irrigation/Native Seed	SF	243,070	\$ 0.75	\$ 182,302.50	
32 91 13	Soil Preparation	SF	281,735	\$ 0.50	\$ 140,867.50	
32 92 19	Native Seeding	SF	243,070	\$ 0.35	\$ 85,074.50	
32 92 23	Turf Sodding	SF	38,665	\$ 0.75	\$ 28,998.75	
32 93 43	Trees	EA	120	\$ 900.00	\$ 108,000.00	
32 93 43	Shrubs	EA	16	\$ 45.00	\$ 720.00	
Environmental Graphics						\$ 15,000.00
	Educational Signage	LS	1	\$ 15,000.00	\$ 15,000.00	

Subtotal \$ 2,115,711.75

Contractor General Conditions / Mobilization (20%) \$ 423,142.35

Construction contingency (10%) \$ 211,571.18

Total Estimated Opinion of Cost \$ 2,750,425.28