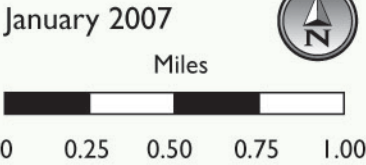


Regional Parks and Trails

Legend

- High Line Canal Trail
- Paved Trail
- On Street Trail
- Unpaved Trail
- Municipal Boundary
- Park
- Golf Course / Country Club
- High Line Canal



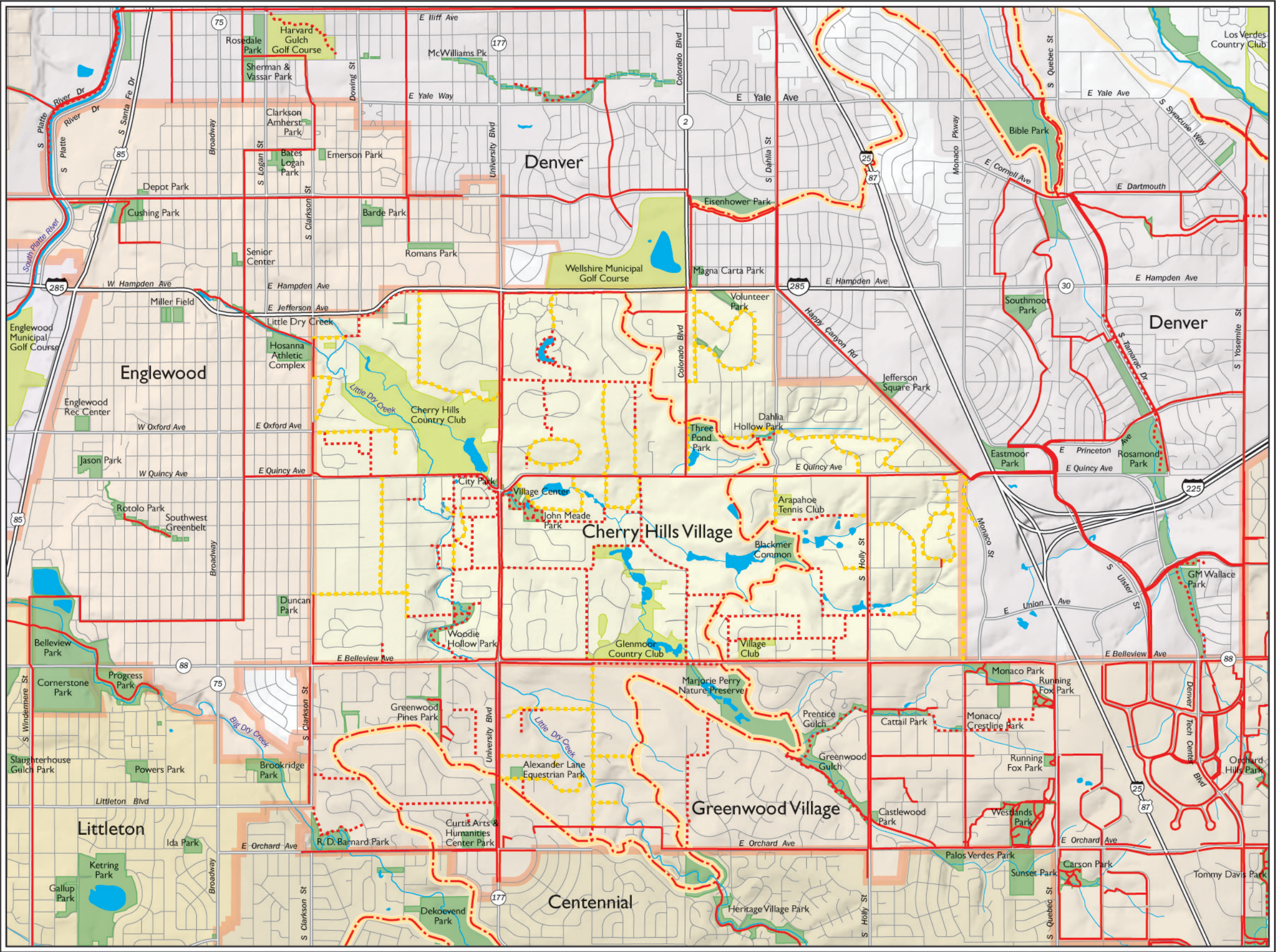
Prairie Lark-Finch



Coyote



Cattails



Welcome to
Cherry Hills Village

Cherry Hills Village's natural setting helps define the community's character. Over half a century of careful planning has resulted in livable residential areas complemented by preserved undeveloped spaces. Neighbors are linked by convenient trails and open spaces. Families can stroll along paths and catch glimpses of wildlife. The unpaved surfaces and breathtaking panoramas welcome horseback riders of all ages. Children, as well as adults, have miles of safe trails for bicycle riding.



Red Tailed Hawk

You're invited to share in the beauty of this place. Watch for the diverse wildlife, including many species of birds, waterfowl, small woodland animals, foxes and coyotes.



the beauty of this place. Watch for the diverse wildlife, including many species of birds, waterfowl, small woodland animals, foxes and coyotes. Enjoy natural features that range from age-old cottonwoods to cattail marshes. Always remember that all who pass through this land are ultimately its guardians and caretakers. Together we can keep Cherry Hills Village special.



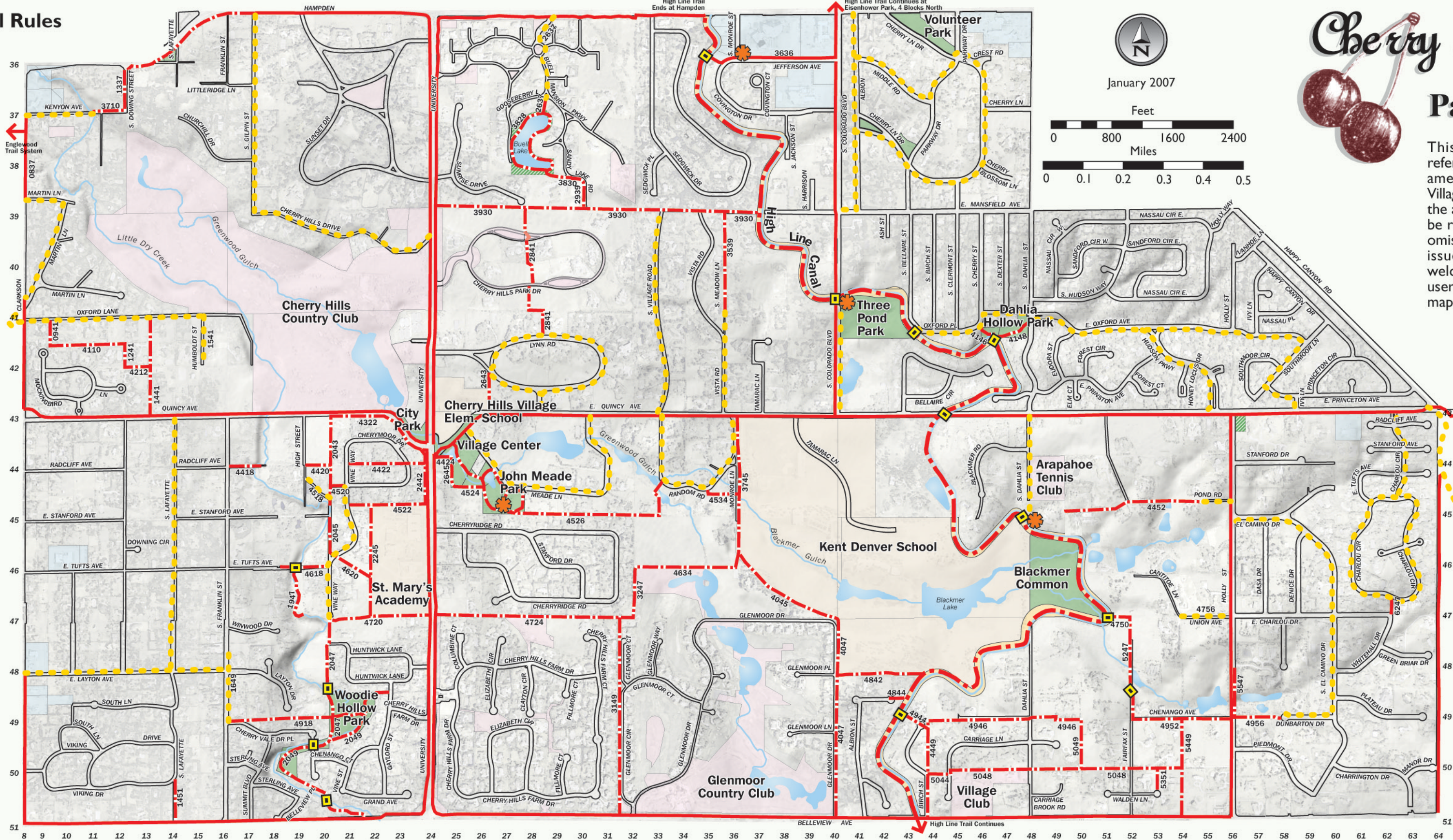
Parks & Facilities

	Horse Riding Areas	Multipurpose Fields	Natural Open Space	Parking	Playground	Shelter	Wildlife Viewing
Blackmer Common Dahlia St. at the High Line Canal				●			●
Dahlia Hollow Park S. Dahlia St. at E. Oxford Ave.				●			●
John Meade Park E. Quincy Ave. at Meade Lane	●			●	●	●	●
Three Pond Park S. Colorado Blvd. at High Line Canal		●		●	●		●
Woodie Hollow Park N.W. of S. University Blvd. & E. Bellevue Ave.		●		●		●	●

General Park & Trail Rules

- Open daily 6 a.m. to 11 p.m.
- Stay to the right.
- Dogs must be on a leash at all times.
- No alcoholic beverages are permitted.
- Use provided litter receptacles; littering or dumping is prohibited.
- Unauthorized motorized vehicles are prohibited.
- Swimming, tubing, boating or rafting is prohibited.
- Weapons, including any projectiles and fireworks are prohibited.
- Golf practice is prohibited.
- Tree houses and rope swings are prohibited.

To report accidents: Call 911.



Cherry Hills Village

Parks and Trails Map

This map was created to provide general references to public trails, parks and recreation amenities. Although the City of Cherry Hills Village has taken every reasonable effort to ensure the accuracy of this information, the City cannot be responsible for consequences resulting from omissions or errors, including but not limited to issues of property lines and easements. We welcome suggestions or corrections from our users for possible inclusion in future efforts. This map is not for sale.

Z-CARD® Trademark of and ©2005 Z Industries
US Patent 5156898 Z-CARD® North America, NYC.
CARD 212-797-3450 www.zcardna.com Job no.

Legend

- Paved Trail
- - - Unpaved Trail
- ... On Street Trail
- ◊ Bridge
- ★ Trail Head / Parking
- ~ Lakes & Waterways

Current Landuse

- Cherry Hills Village park
- Cherry Hills Village Open Space easement
- High Line Canal
- Churches
- Schools
- Country Club / Homeowners Association Open Space

Land Dedication: The Key to Preserving Natural Settings

You can contribute to trails and open spaces by dedicating a portion of your land to be set aside to remain undeveloped. Your land contribution can help maintain our community's natural beauty and create areas that serve a variety of recreational uses. Contributions may also directly benefit you by giving you an immediate tax deduction and lowering the tax burden on your estate.

If you would like more information about the benefits of making a land donation to the Cherry Hills Village Enhancement Project, call 303-789-2541 or write to CHV, Village Center, 2450 E. Quincy Ave., Cherry Hills Village, CO 80110. Through your generosity and goodwill, we can leave Cherry Hills Village with a legacy that will be here for future generations to enjoy and treasure.

